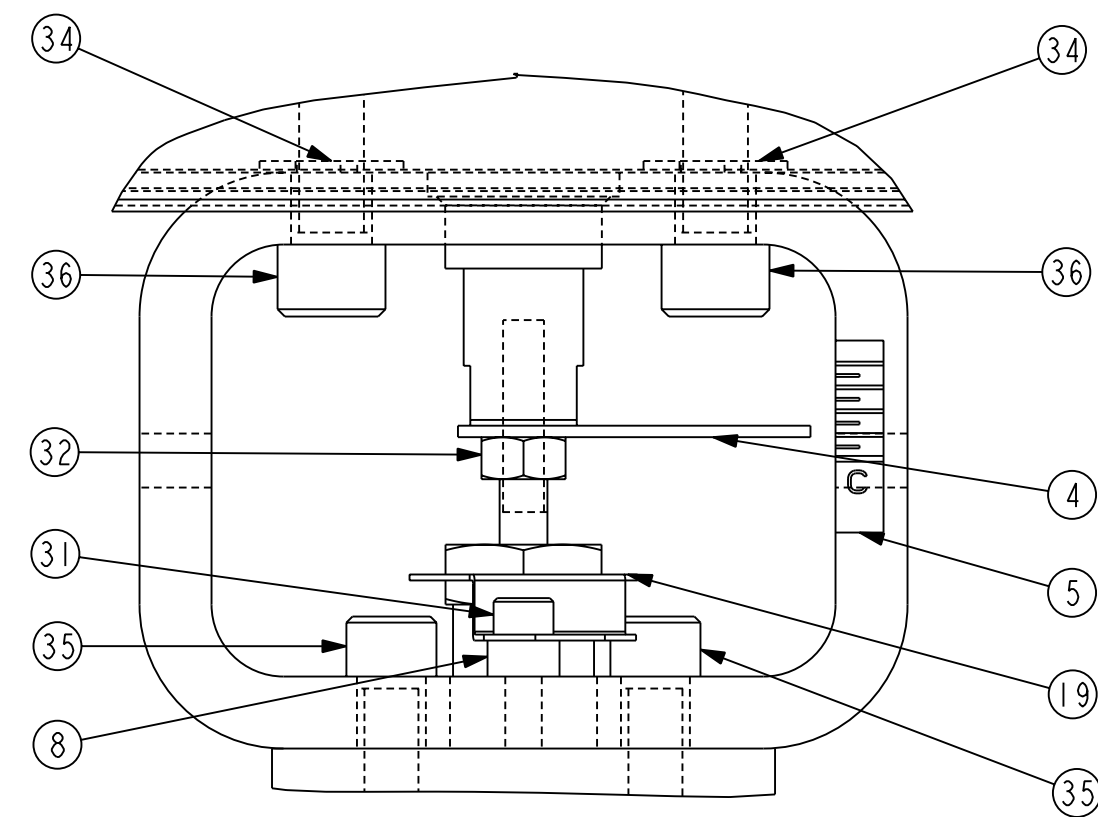
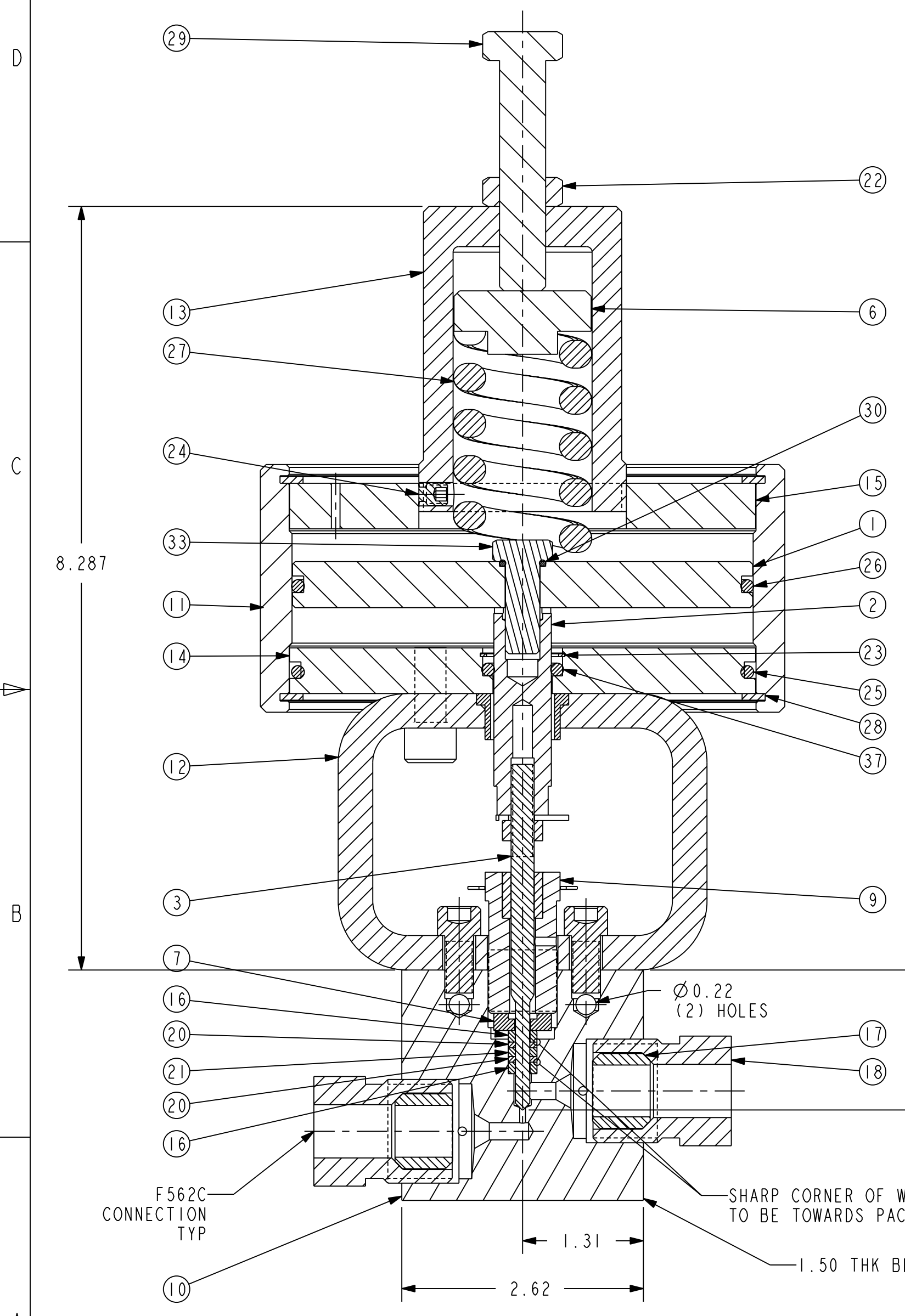


ASSY: ----

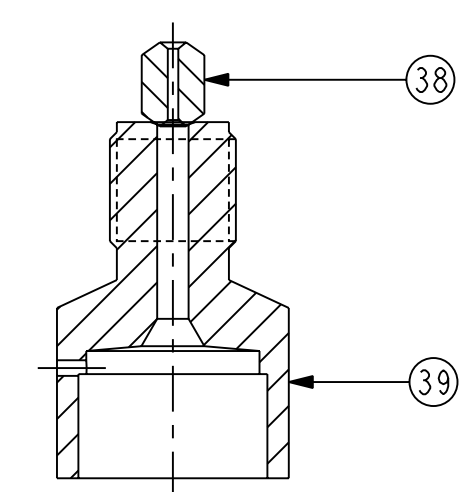
THIS DOCUMENT MAY CONTAIN INFORMATION AFFECTING THE NATIONAL DEFENSE OF THE UNITED STATES WITHIN THE MEANING OF THE ESPIONAGE ACT, OR MAY REPRESENT A PROPRIETARY ARTICLE TO WHICH SNAP-TITE, INC. RETAINS THE EXCLUSIVE RIGHT OF MANUFACTURE AND SALE. THIS DOCUMENT IS DISCLOSED IN CONFIDENCE, AND ITS POSSESSION DOES NOT CONVEY PERMISSION TO MANUFACTURE THE ARTICLE DEPICTED HEREIN. SUCH PERMISSION MAY BE GRANTED ONLY BY SPECIFIC AUTHORIZATION IN WRITING, SIGNED BY AN OFFICER OF SNAP-TITE, INC.

#	REVISION	BY:	APP
8	ADDED 3 WAY 1 ON PRESS. REP SEAT OPTION	SAJ	JHR
		DATE: 1/25/02	
		BY:	
		DATE:	

DESCRIPTION	BODY P/N	STEM TYPE	CATALOG NUMBER	STEM P/N
2 STEM MANIFOLD	2030-6457-YB	VEE	60VM9085-OIS	-
3 WAY 1 ON PRESSURE REPLACEABLE SEAT	101F-2092-YB	REG	60VM9075-OIS	101C-0475
		REG	60VM9884-OIS	-
		VEE	60VM9874-OIS	101C-0475
		REG	60VM9882-OIS	-
2 WAY ANGLE REPLACEABLE SEAT	2030-6454-YB	VEE	60VM9872-OIS	101C-0475
		REG	60VM9084-OIS	-
3 WAY 1 ON PRESSURE	2030-6455-YB	VEE	60VM9074-OIS	101C-0475
		REG	60VM9083-OIS	-
3 WAY 2 ON PRESSURE	2030-6458-YB	VEE	60VM9073-OIS	101C-0475
		REG	60VM9082-OIS	-
2 WAY ANGLE	2030-6456-YB	VEE	60VM9072-OIS	101C-0475
		REG	60VM9081-OIS	-
2 WAY STRAIGHT	2030-6453-YB	VEE	60VM9071-OIS	101C-0475



MAX ALLOW WORKING PRESSURE: 60000 PSI @ RT
 HYDROTEST PRESSURE: 75000 PSI @ RT
 MAX ALLOW AIR PRESSURE: 100 PSI
 AIR PRESSURE REQD FOR OPERATION: 95 PSI
 PACKING GLAND TORQUE: 60 FT-LBS
 SEAT RETAINER TORQUE: 40 FT-LBS
 APPROX SPRING COMPRESSION AT MAX VALVE RATING: 0.56
 APPROX STEM LIFT AT MAX VALVE RATING: 0.06
 ALLOWABLE PISTON TEMP: -20°F TO 200°F
 AREA OF PISTON: 19.6 SQ IN.



#PER TABLE ABOVE
 *AS REQUIRED

ITEM No.	QTY.	PART No.	Description	Material
1	1	101B-9018	PISTON	ALUM
2	1	101C-0456	SHAFT	316 SS
3	1	101C-0475	STEM 60VM AOV	17-4
4	1	101C-0484	INDICATOR	300 SERIES SS
5	1	101C-0494	STEM POSITION DECAL	PLASTIC
6	1	1020-8912	SPRING SUPPRESSOR	C STEEL
7	1	1020-9447	BACK-UP WASHER	17-4PH
8	1	105A-2577	SPACER	304 SS
9	1	202B-4929	PACKING GLAND ASSM	316 SS
10	1	2030-6453-YB	VALVE BODY 9/16" 60VM	316 SS
11	1	301A-3640	HOUSING	ALUMINUM
12	1	301A-3641	YOKE ASSM	STEEL
13	1	3050-4752	SPRING HOUSING	ALUM
14	1	305A-3639	BOTTOM COVER ATO	ALUM
15	1	306A-3639	TOP COVER ATO	ALUM
16	2	3130-1477	PACKING WASHER	17-4PH
17	2	ACL90	COLLAR	316 SS
18	2	AGL90	GLAND	316 SS
19	1	P-0323	LOCKING DEVICE	302 SS
20	2	P-0829	PACKING	NYLON
21	1	P-0830	PACKING	LEATHER
22	1	P-0878	HEX JAM NUT 1/2-13	STEEL
23	1	P-1391	RETAINING RING	C'STL
24	1	P-1718	HEX SOC SET SCREW, 1/4-20 X 0.31 LG, HDQG	STEEL
25	1	P-1719	O-RING UNIF #248	BUNA-N
26	1	P-1720	O-RING UNIF #248	TFE. COATED
27	1	P-1723	SPRING 1 1/2 X 2 1/2 EHD 368LB / 1/8	CHROME-VANADIUM
28	2	P-1724	RETAINING RING	C'STL
29	1	P-1733	SCREW, HEX HD CAP, 1/2-13 X 2.50 LG	Cd PLATED STEEL
30	1	P-1834	O-RING UNIF #012	BUNA-N
31	1	P-1995	SOC HD CAP SCREW, #10--24 X 0.38 LG	300 SERIES SS
32	1	P-3289	HEX NUT, 1/4-28	STEEL
33	1	P-3510	SCREW, HEX HD CAP, 3/8-16 X 1.00 LG	STEEL
34	2	P-8918	THREAD SEAL	BUNA-N/STEEL
35	2	P-8920	SOC HD CAP SCREW, 5/16-24 X 0.62 LG	STEEL
36	2	P-8921	SOC HD CAP SCREW, 3/8-16 X 0.88 LG	STEEL
37	1	P-8922	O-RING UNIF #208	BUNA-N
38	1	101B-1387	REPLACEABLE SEAT	17-4PH
39	1	101C-5963	SEAT RETAINER	316 SS

ITEM No.	QTY	PART No.	Description	Material	Cat# Suffix
20A/21A	1	P-8933	PACKING	GRAPHITE YARN 0°F TO 800°F	-GY
20A/21A	2	P-8713	PACKING	TEFLON GLASS -1000°F TO 600°F	-TG
3A	1	102C-0475-C	VEE STEM	N-DURA	-CS
3B	1	104C-0475	VEE STEM	STELLITE	-STS
38A	1	105B-1387-C	REPLACEABLE SEAT	N-DURA	-CSS
38B	1	102B-1387	REPLACEABLE SEAT	STELLITE	-SRS

P/N: 60VM9XXX-OIS
 MATERIAL: 316 SS
 P/S: NONE REF PART: NONE
 DWN: BMH 12/14/87 APPVD: SGR
 DO NOT SCALE DRAWING

Snap-tite, Inc. - Erie, Pennsylvania, U. S. A.
 Autoclave Engineers Division

VALVE ASSEMBLY
 9/16" 60VM-OIS

SIZE: C EWO: STD DWG. NO.: 30A-0629 REV: 8
 SCALE: 7:8 H4-1 CODE: 78357 SHEET: 1 OF 1

CONTROL DRAWING