

ASSY: ----

THIS DOCUMENT MAY CONTAIN INFORMATION AFFECTING THE NATIONAL DEFENSE OF THE UNITED STATES WITHIN THE MEANING OF THE ESPIONAGE ACT, OR MAY REPRESENT A PROPRIETARY ARTICLE TO WHICH SNAP-TITE, INC. RETAINS THE EXCLUSIVE RIGHT OF MANUFACTURE AND SALE. THIS DOCUMENT IS DISCLOSED IN CONFIDENCE, AND ITS POSSESSION DOES NOT CONVEY PERMISSION TO MANUFACTURE THE ARTICLE DEPICTED HEREIN. SUCH PERMISSION MAY BE GRANTED ONLY BY SPECIFIC AUTHORIZATION IN WRITING, SIGNED BY AN OFFICER OF SNAP-TITE, INC.

#	REVISION	BY:BMH	APP
13	REDRAWN AND UPDATED	DATE: 1/31/08	SAJ
14	STELLITE SEAT WAS 102A-1387, N-DURA SEAT WAS 102A-1387 ADDED TG BACK-UP	DATE: 6/21/11	SAJ

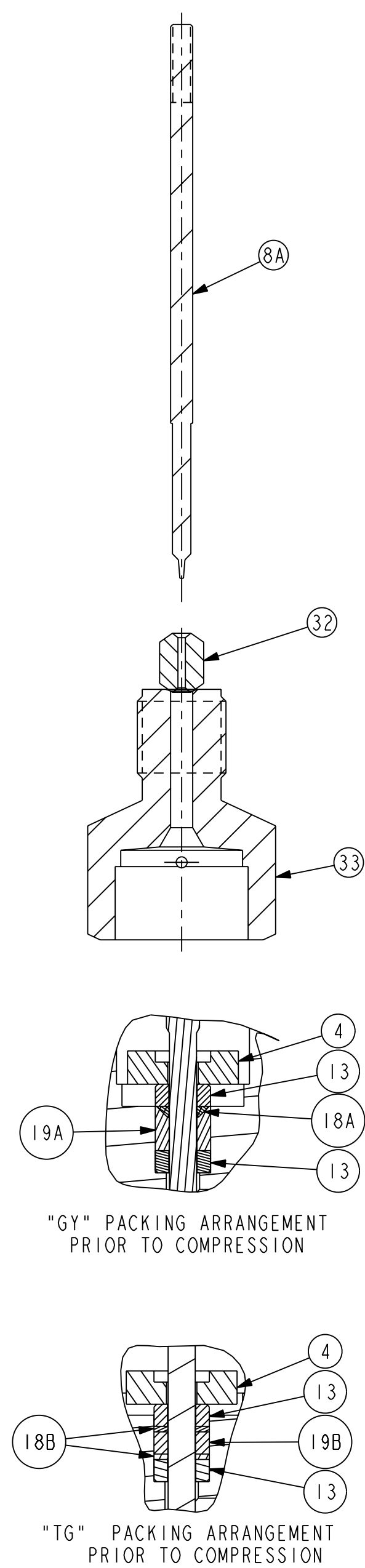
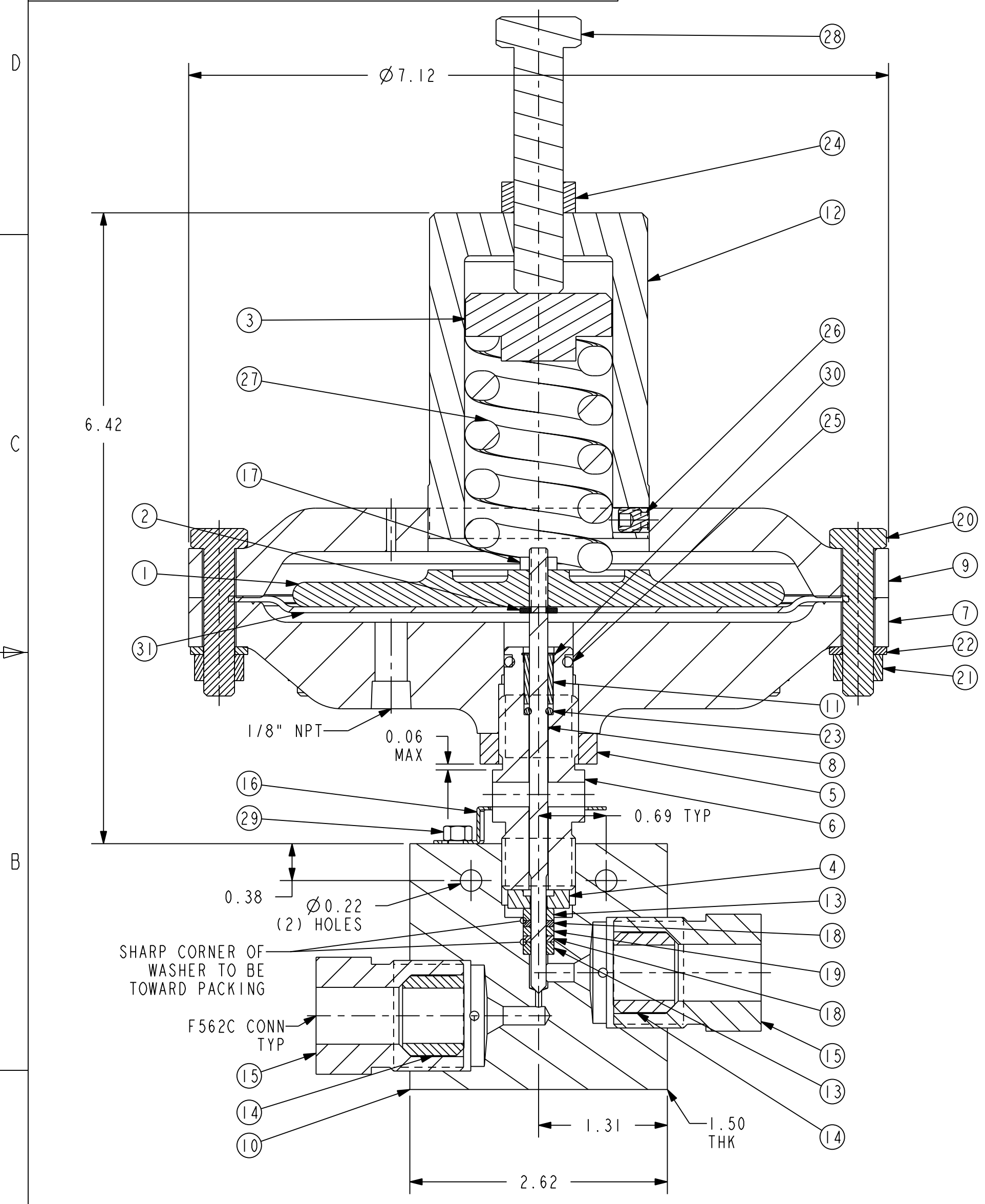
  

DESCRIPTION	BODY P/N	STEM TYPE	CATALOG NUMBER	STEM P/N
2 STEM MANIFOLD	2030-6457-DA	VEE	60VM9085-OM	101B-1309
2 WAY ANGLE REPLACEABLE SEAT	2030-6454-DA	VEE	60VM9075-OM	2010-7037
		REG	60VM9882-OM	101B-1309
3 WAY 1 ON PRESSURE	2030-6455-DA	VEE	60VM9872-OM	2010-7037
		REG	60VM9084-OM	101B-1309
3 WAY 2 ON PRESSURE	2030-6452-DA	VEE	60VM9074-OM	2010-7037
		REG	60VM9083-OM	101B-1309
2 WAY ANGLE	2030-6456-DA	VEE	60VM9072-OM	2010-7037
		REG	60VM9082-OM	101B-1309
2 WAY STRAIGHT	2030-6453-DA	VEE	60VM9071-OM	2010-7037
		REG	60VM9081-OM	101B-1309

MAX ALLOW WORKING PRESSURE: 60000 PSI @ RT  
 HYDROTEST PRESSURE: 75000 PSI @ RT  
 MAX ALLOW AIR PRESSURE: 100 PSI  
 AIR PRESSURE REQD AT VALVE RATING: 95 PSI  
 PACKING GLAND TORQUE: 60 FT-LBS  
 SEAT RETAINER TORQUE: 45 FT-LBS  
 APPROX SPRING COMPRESSION AT MAX VALVE RATING: 0.50  
 APPROX STEM LIFT AT MAX VALVE RATING: 0.13  
 ALLOWABLE DIAPHRAGM TEMP: -40°F TO 200°F  
 AREA OF DIAPHRAGM: 19.6 SQ IN.

#PER TABLE ABOVE  
 \*AS REQUIRED

Top Level Assembly BOM				
ITEM No.	QTY.	PART No.	Description	Material
1	1	101A-0326	DIAPHRAGM HEAD	DUCTILE IRON
2	1	101B-8357	THREADED WASHER	STEEL
3	1	1020-8912	SPRING SUPPRESSOR	C STEEL
4	1	1020-9447	BACK-UP WASHER	17-4PH
5	1	1030-9841	LOCKNUT	316 SS
6	1	1040-9841	PACKING GLAND	316 SS
7	1	2010-5686	LOWER HOUSING	ALUMINUM
8	1	2010-7037	VEE STEM	17-4PH
9	1	2020-5686	UPPER HOUSING -OM	ALUM
10	1	2030-6453-DA	VALVE BODY 9/16" 60VM	316 SS
11	1	2060-6281	SLEEVE	NYLON
12	1	3050-4752	SPRING HOUSING	ALUMINUM
13	2	3130-1477	PACKING WASHER	17-4PH
14	2	ACL90	COLLAR	316 SS
15	2	AGL90	GLAND	316 SS
16	1	P-0500	LOCKING DEVICE	302 SS
17	1	P-0729	HEX NUT, #10-24	STEEL
18	2	P-0829	PACKING	NYLON
19	1	P-0830	PACKING	LEATHER
20	8	P-0837	SCREW, HEX HD CAP, 5/16-18 X 1.50 LG	Zn PLATED STEEL
21	8	P-0840	HEX NUT, 5/16-18	STEEL
22	8	P-0841	LOCKWASHER, SPRING, 5/16, REGULAR	PLATED STEEL
23	1	P-0847	O-RING UNIF #007	BUNA-N
24	1	P-0878	HEX JAM NUT 1/2-13	STEEL
25	1	P-0885	O-RING UNIF #112	BUNA-N
26	1	P-1718	HEX SOC SET SCREW, 1/4-20 X 0.31 LG, HD0G	STEEL
27	1	P-1723	SPRING 1 1/2 X 2 1/2 EHD 368LB / 1/8	CHROME-VANADIUM
28	1	P-1733	SCREW, HEX HD CAP, 1/2-13 X 2.50 LG	Cd PLATED STEEL
29	1	P-6909	SCREW, HEX HD CAP	300 SER SS
30	1	P-9591	RETAINING RING	300 SERIES SS
31	1	103A-0326	DIAPHRAGM	NEOPRENE
32	1	101B-1387	REPLACEABLE SEAT	17-4PH
33	1	101C-5963	SEAT RETAINER	316 SS



OPTIONAL PARTS LIST					
ITEM NO.	QTY.	PART NO.	DESCRIPTION	MATERIAL	CAT NO. SUFFIX
8B	1	101A-3401	VEE STEM	STELLITE	-STS
8C	1	103A-3401-C	VEE STEM	N-DURA	-CS
18A	1	101A-5589	WEDGE RING	BERYLCO	-GY
19A	1	P-8933	PACKING	GRAHPITE YARN	-GY
18B	2	90865	BACK-UP	PEEK	-TG
19B	1	P-8713	PACKING	TEFLON GLASS	-TG
32A	1	102B-1387	REPLACEABLE SEAT	STELLITE	-SRS
32B	1	105B-1387-C	REPLACEABLE SEAT	N-DURA	-CSS

P/N: 60VM9XXX-OM  
 MATERIAL: 316 SS  
 P/S: NONE REF PART: NONE  
 DWN: RKR 11/11/76 APPVD: RKR  
 DO NOT SCALE DRAWING

**Snap-tite, Inc. - Erie, Pennsylvania, U. S. A.**  
 Autoclave Engineers Division

**AIR VALVE ASSEMBLY**  
 9/16" 60VM-OM

SIZE: **C** EWO: STD DWG. NO.: **30A-0149** REV: **14**  
 SCALE: 1:1 H4-1 CODE: 78357 SHEET: 1 OF 1