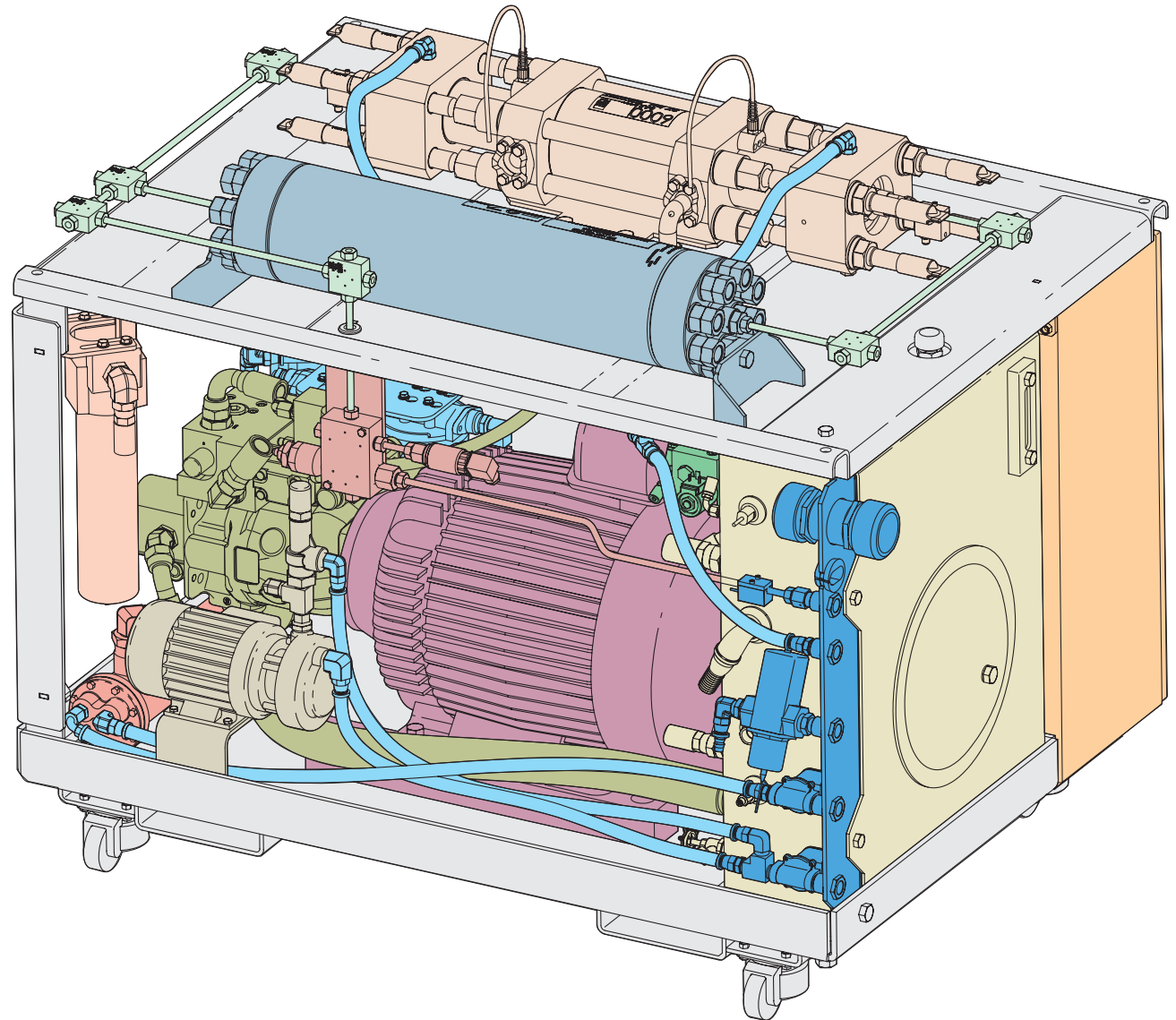


LEGEND

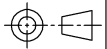

- CONTROL ENCLOSURE
- FRAME/WHEELS
- WATER/FILTER SYSTEM
- 87K INTENSIFIER
- BULKHEAD
- HIGH-PRESSURE WATER TUBING
- HYDRAULIC SYSTEM
- OIL FILTER
- RESERVOIR ASSEMBLY
- HEAT EXCHANGER ASSEMBLY
- MOTOR
- ATTENUATOR
- PROPORTIONAL VALVE
- BLEED DOWN VALVE ASSEMBLY
- BOOSTER PUMP

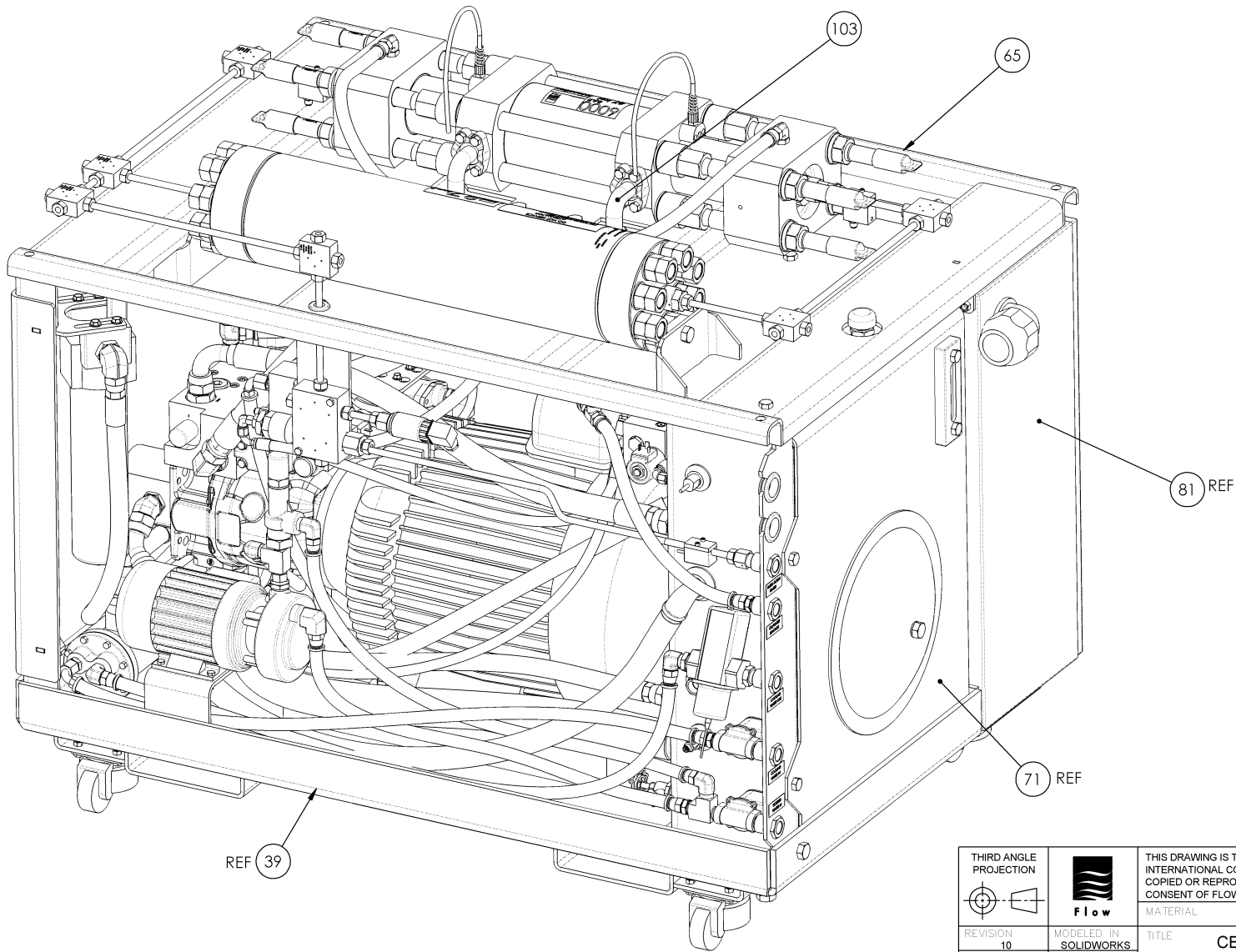


Hyperjet 6050 Pump Top Assembly

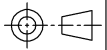

ITEM	QTY	U/M	PART NUMBER	DESCRIPTION	ITEM	QTY	U/M	PART NUMBER	DESCRIPTION	
101. ITEMS NOT SHOWN: 82, 99, 104 AND 107-112.										
102. ITEMS 108-112 ARE COMPONENTS FOR HIGH PRESSURE INTERCONNECT WITH TABLE.										
103. ITEMS SHOWN IN PARENTHESIS INDICATE COMPONENTS OF HOSE KIT (ITEM 101).										
	96	1	EA	A-0714-14	ELBOW;MALE;BRS;1/2"OD;1/2 NPTF	5	1	EA	020505-1	BOOST PUMP ASSY; 6050 87K PUMP
	97	5	EA	A-0817-5	CONNECTOR;37 DEG;SWVL;PUSH-LOK	8	4	EA	A-18377	CASTER;LEVELING
	98	110	IN	A-0796-3	HOSE;LOW PRESS;PUSH-LOK;1/2"ID	14	1	EA	A-12819	HOUSING;FILTER;6 MICRON
	99	1	EA	020851-DWG	HYDRAULIC SCHEMATIC;6050 87K	18	4	EA	A-00825-7	CLAMP;T-BOLT;SST;2-1/2 IN
	100	2	EA	A-0817-1	CONNECTOR;37 DEG;SWVL;PUSH-LOK	25	1	EA	202699-32	SPLIT FLANGE KIT;CODE 61;2"
	101	1	EA	040207-1	HOSE KIT;6050 SERIES PUMP	39	1	EA	020221-1	FRAME;BASE;ASSY;87K PUMP;50HP
	102	1	EA	A-00825-31	CLAMP;T-BOLT;SST	41	1	EA	020410-1	BULKHEAD ASSY;87KPUMP6050/6100
	103	1	EA	A-22179-16	ELBOW; SAE FLANGE TO MJIC;C-61	51	1	EA	A-0803-5	FLANGE HD;90 DEG ELBOW;REUSE
	(09) 104	106	IN	A-00809-7	CONDUIT;FLEXIBLE; 2 IN	61	1	EA	A-0650-6	PLUG;HEX HD;BRS;3/4
	(10) 106	4	EA	A-0405-17	WASHER;FLAT;NYLON;.656 ID	65	1	EA	020549-1	TOP PLATE ASSY; HYPERJET 50
	(10) 107	1	EA	040521-1	LABEL KIT; HYPERJET 50	66	1	EA	020364-1	LEG WELDMENT; 87K PUMP
	(10) 108	1	EA	012952-1	PLUG;DOUBLE CONE;3/8;6000 BAR	67	1	EA	020367-1	LEG;INNER;WELDMENT
	(10) 109	1	EA	013149-1	ADAPTER;3/8M X 1/4F;6000 BAR	70	1	EA	020411-1	PLC ENCLOSURE MTG BRACKET
	(10) 110	1	EA	014168-1	CROSS;3/8 HP;87KSI;LL	71	1	EA	020551-1	RESERVOIR ASSY; 6050 87K
	(10) 111	16	ME	A-2883	TUBING;FLEX 9/32	73	1	EA	020400-1	BOOST PUMP BRACKET;6050 87K
	(10) 112	1	EA	040361-1	HP TUBE; INTERFACE ;6100 PUMP	74	1	EA	020552-1	WATER FILTER ASSY;HYPERJET 50
						75	1	EA	A-22018-1	HEAT EXCHANGER;4 PASS;EK-718-F
						76	1	EA	020544-1	GAUGE PANEL ASSY;HYPERJET;50
						77	1	EA	020364-5	HYD LEG WELDMENT; 87K PUMP
						78	9	EA	A-19741-7	CONNECTOR; INSUL MECH;2P;4-14
						79	1	EA	020670-1	MOTOR/PUMP ASSY; 6050/6100
						80	1	EA	020101-1	CE ENCL ASSY;PLC;87K PUMP;50
						81	1	EA	040168-1	SOFT START ENCL;6060 SERIES
						82	1	EA	020325-1	CORDSET KIT;87K II PUMP;50
						84	1	EA	A-0636-6	CONNECTOR;STR THD;STL;1/4" OD
						85	1	EA	A-0636-23	CONNECTOR;STR THD;STL;1" OD
						86	1	EA	A-0644-12	ELBOW;45 DEG;STR THD;STL;1" OD
						87	1	EA	A-0636-19	CONNECTOR;STR THD;STL;3/4" OD
						88	3	EA	A-0725-8	ELBOW;SWIVEL;NUT;STL;3/4" OD
						89	1	EA	A-0638-3	ELBOW;STR THD;STL;1/4" OD
						90	1	EA	A-0644-10	ELBOW;45 DEG;STR THD;STL;3/4"
						91	2	EA	A-0638-21	ELBOW;STR THD;3/4 OD;1 5/16-12
						92	2	EA	A-0756-22	BUSHING;RDCR;STL;1-1/2 X 1
						93	2	EA	A-0739-21	ELBOW;MALE;STL;3/4"OD;1 NPTF
						94	1	EA	A-0713-14	CONN;MALE;BRS;1/2" OD;1/2 NPTF
						95	1	EA	A-0822-3	ELBOW;JIC 37 DEG;SWVL;PUSHLOK

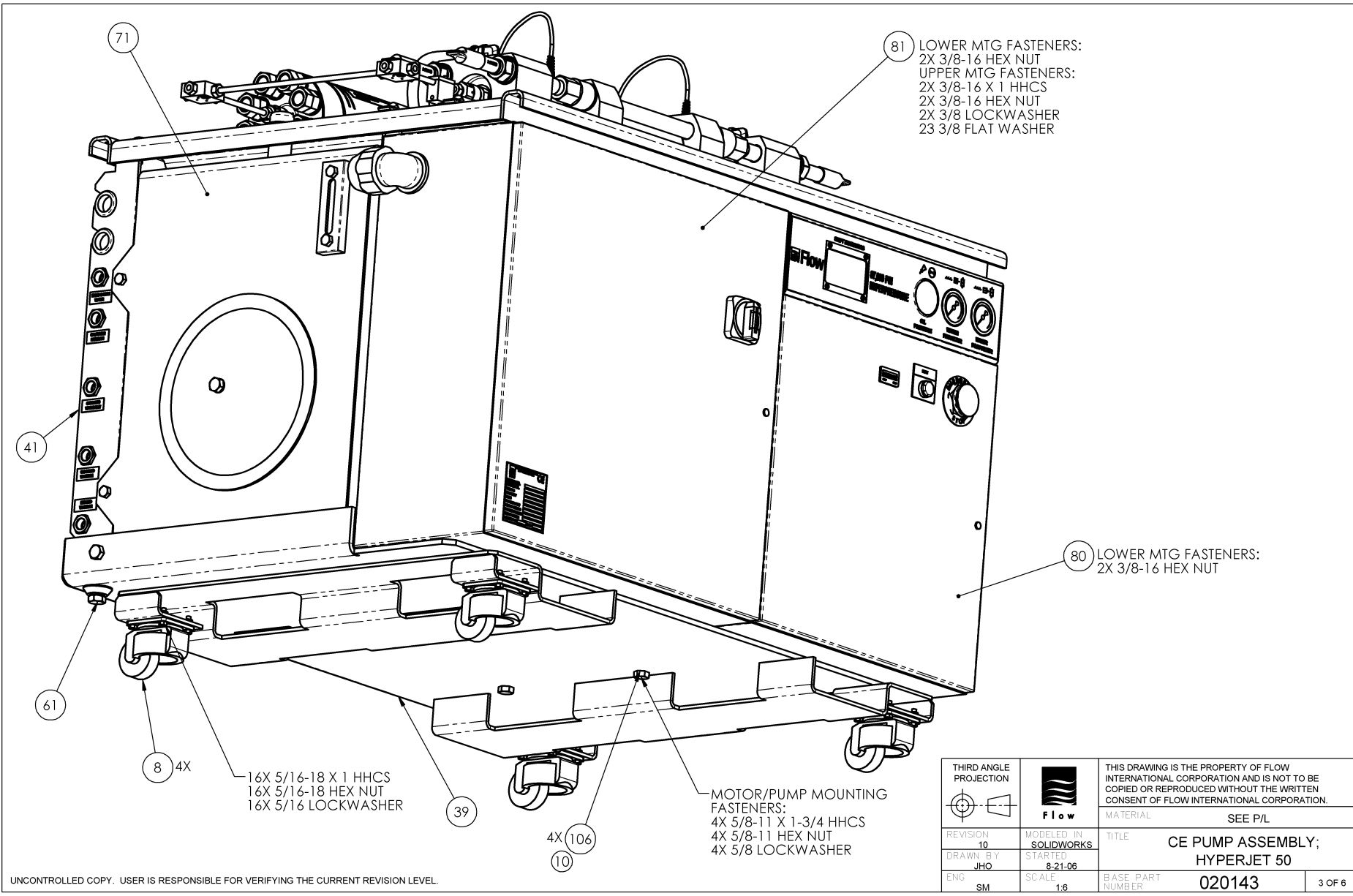
UNCONTROLLED COPY. USER IS RESPONSIBLE FOR VERIFYING THE CURRENT REVISION LEVEL.

 THIRD ANGLE PROJECTION	 Flow	THIS DRAWING IS THE PROPERTY OF FLOW INTERNATIONAL CORPORATION AND IS NOT TO BE COPIED OR REPRODUCED WITHOUT THE WRITTEN CONSENT OF FLOW INTERNATIONAL CORPORATION.	
		MATERIAL	SEE P/L
REVISION 10	MODELED IN SOLIDWORKS	TITLE CE PUMP ASSEMBLY; HYPERJET 50	
DRAWN BY JHO	STARTED 8-21-06	BASE PART NUMBER 020143	
ENG SM	SCALE 1:8	1 OF 6	



UNCONTROLLED COPY. USER IS RESPONSIBLE FOR VERIFYING THE CURRENT REVISION LEVEL.

THIRD ANGLE PROJECTION 		THIS DRAWING IS THE PROPERTY OF FLOW INTERNATIONAL CORPORATION AND IS NOT TO BE COPIED OR REPRODUCED WITHOUT THE WRITTEN CONSENT OF FLOW INTERNATIONAL CORPORATION.	
REVISION 10	MODELED IN SOLIDWORKS	MATERIAL	SEE P/L
DRAWN BY JHO	STARTED 8-21-06	TITLE CE PUMP ASSEMBLY; HYPERJET 50	
ENG SM	SCALE 1:8	BASE PART NUMBER	020143
			2 OF 6



81 LOWER MTG FASTENERS:
 2X 3/8-16 HEX NUT
 UPPER MTG FASTENERS:
 2X 3/8-16 X 1 HHCS
 2X 3/8-16 HEX NUT
 2X 3/8 LOCKWASHER
 23 3/8 FLAT WASHER

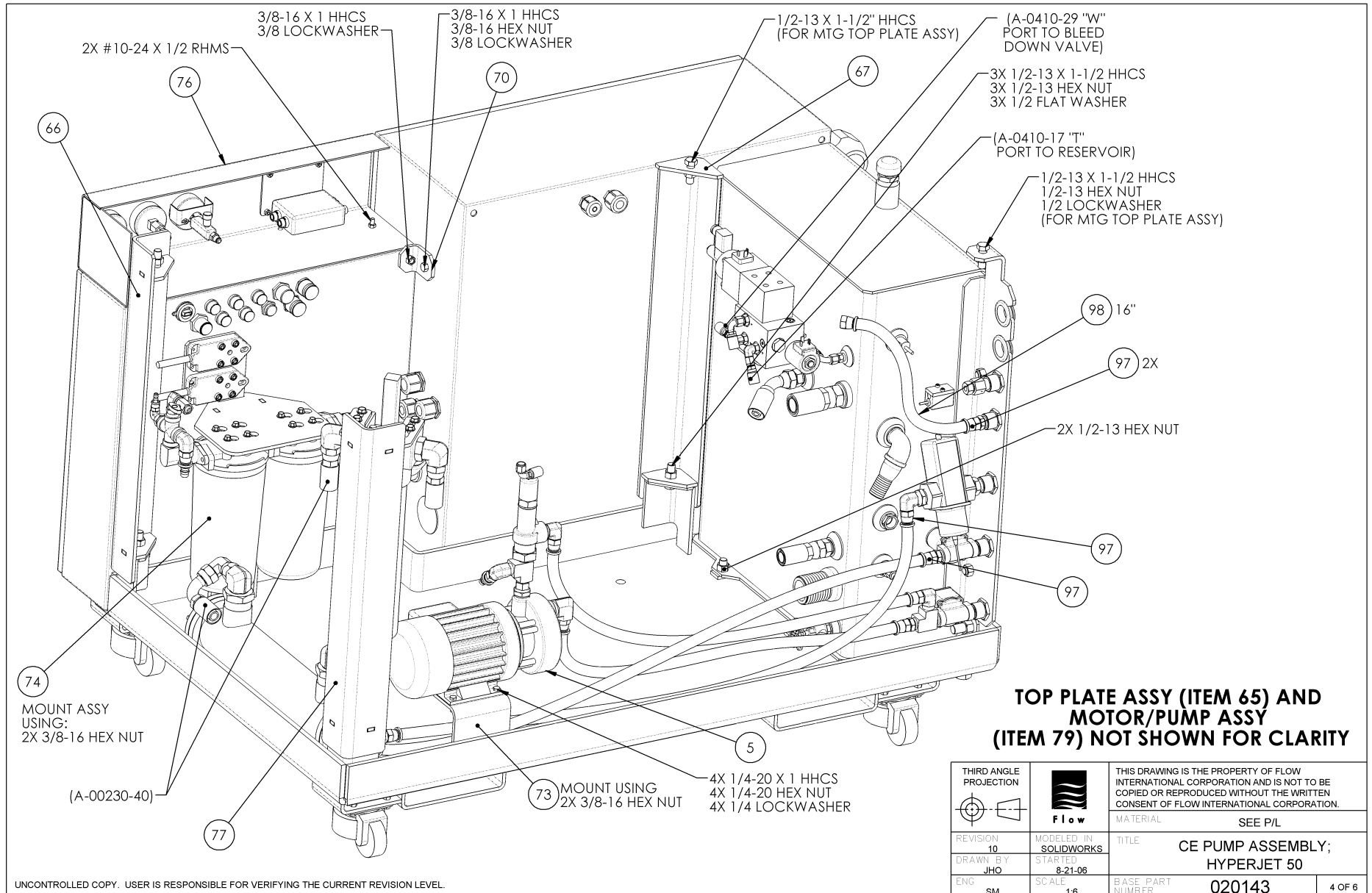
80 LOWER MTG FASTENERS:
 2X 3/8-16 HEX NUT

8 4X
 16X 5/16-18 X 1 HHCS
 16X 5/16-18 HEX NUT
 16X 5/16 LOCKWASHER

MOTOR/PUMP MOUNTING
 FASTENERS:
 4X 5/8-11 X 1-3/4 HHCS
 4X 5/8-11 HEX NUT
 4X 5/8 LOCKWASHER

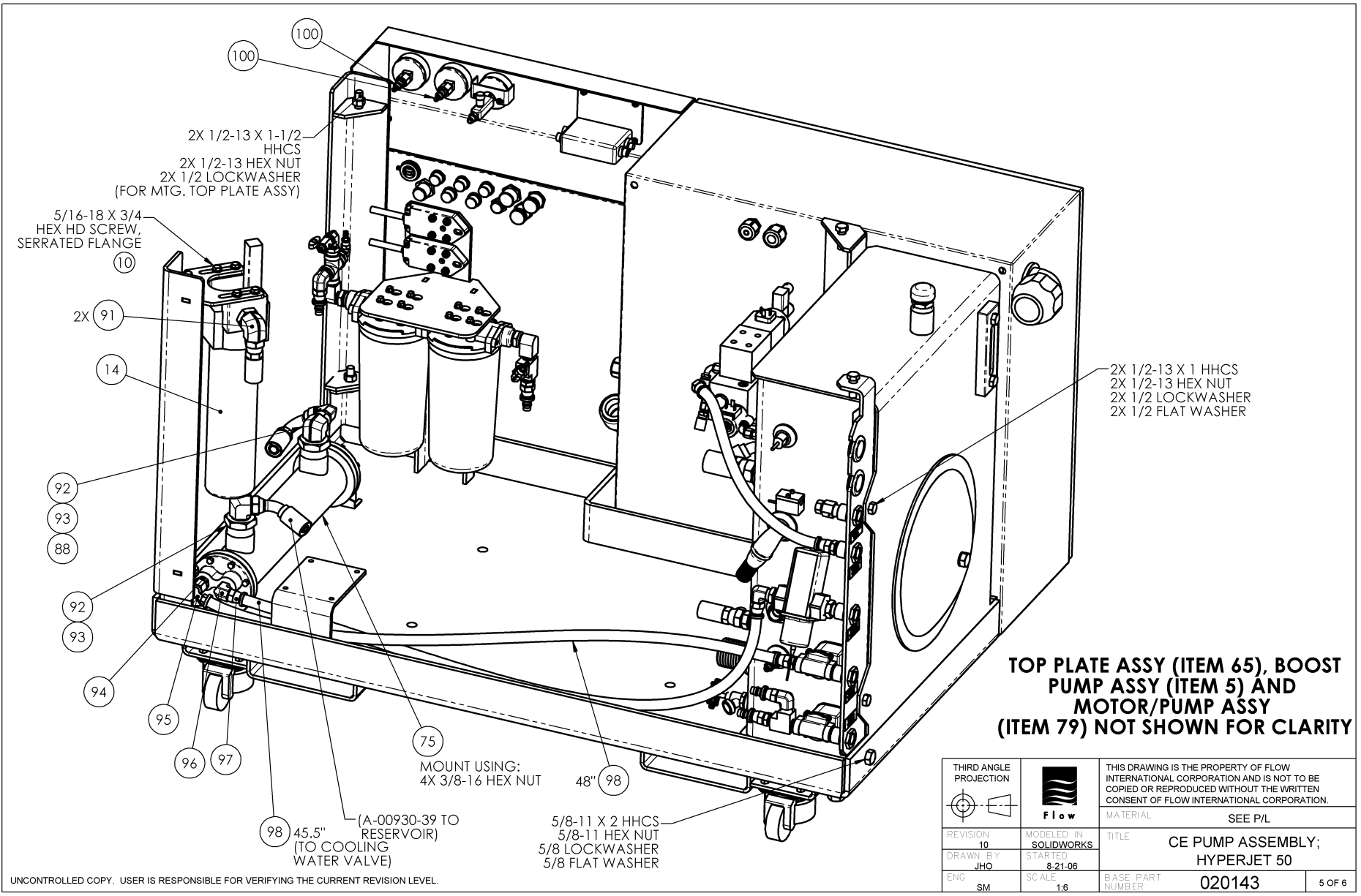
UNCONTROLLED COPY. USER IS RESPONSIBLE FOR VERIFYING THE CURRENT REVISION LEVEL.

THIRD ANGLE PROJECTION		THIS DRAWING IS THE PROPERTY OF FLOW INTERNATIONAL CORPORATION AND IS NOT TO BE COPIED OR REPRODUCED WITHOUT THE WRITTEN CONSENT OF FLOW INTERNATIONAL CORPORATION.	
		MATERIAL	SEE P/L
REVISION 10	MODELED IN SOLIDWORKS	TITLE CE PUMP ASSEMBLY; HYPERJET 50	
DRAWN BY JHO	STARTED 8-21-06	BASE PART NUMBER 020143	
ENG SM	SCALE 1:6	3 OF 6	



UNCONTROLLED COPY. USER IS RESPONSIBLE FOR VERIFYING THE CURRENT REVISION LEVEL.

THIRD ANGLE PROJECTION		THIS DRAWING IS THE PROPERTY OF FLOW INTERNATIONAL CORPORATION AND IS NOT TO BE COPIED OR REPRODUCED WITHOUT THE WRITTEN CONSENT OF FLOW INTERNATIONAL CORPORATION.	
REVISION 10	MODELED IN SOLIDWORKS	MATERIAL	SEE P/L
DRAWN BY JHO	STARTED 8-21-06	TITLE	CE PUMP ASSEMBLY; HYPERJET 50
ENG SM	SCALE 1:6	BASE PART NUMBER	020143
			4 OF 6



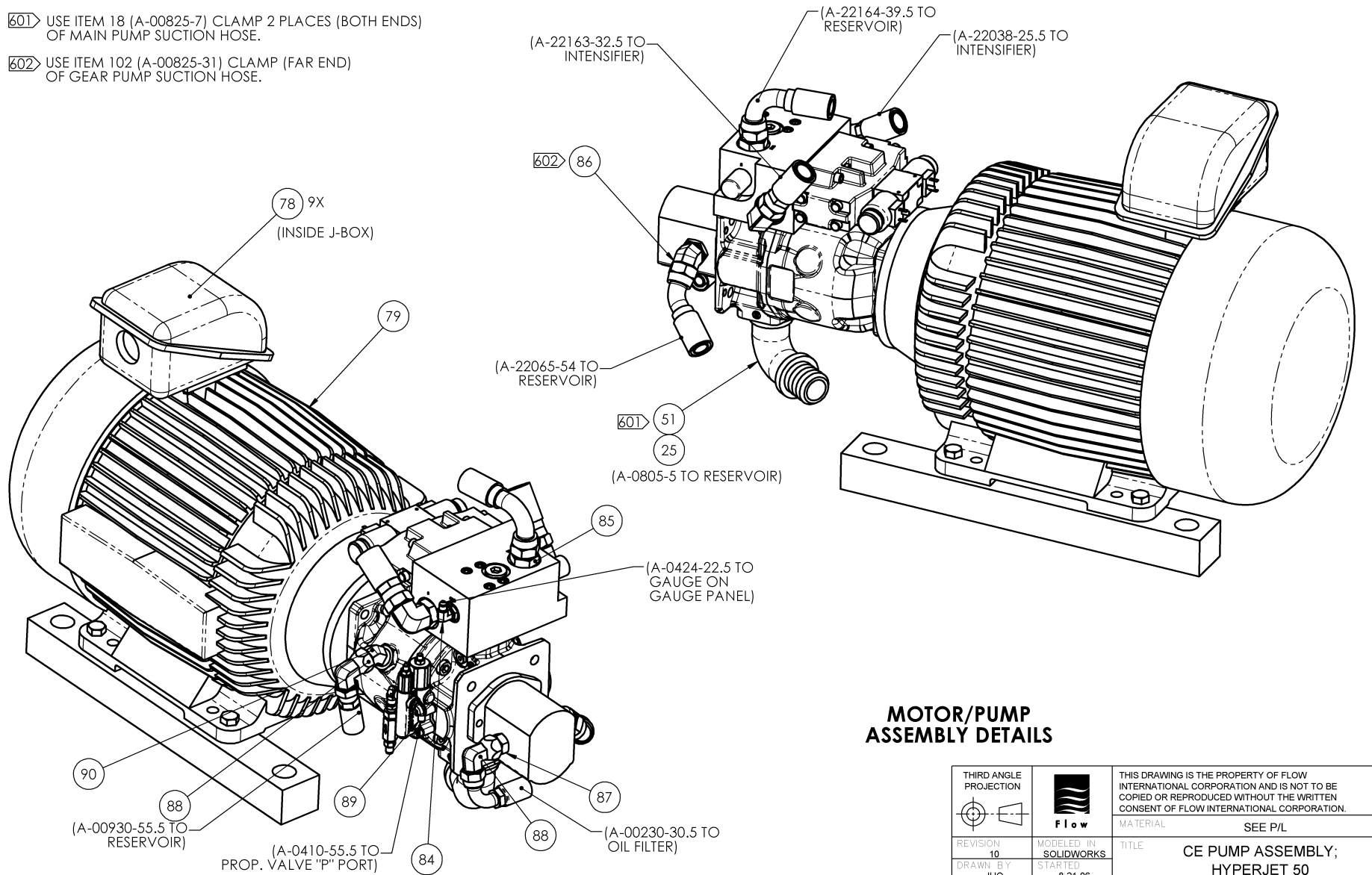
TOP PLATE ASSY (ITEM 65), BOOST PUMP ASSY (ITEM 5) AND MOTOR/PUMP ASSY (ITEM 79) NOT SHOWN FOR CLARITY

UNCONTROLLED COPY. USER IS RESPONSIBLE FOR VERIFYING THE CURRENT REVISION LEVEL.

THIRD ANGLE PROJECTION		THIS DRAWING IS THE PROPERTY OF FLOW INTERNATIONAL CORPORATION AND IS NOT TO BE COPIED OR REPRODUCED WITHOUT THE WRITTEN CONSENT OF FLOW INTERNATIONAL CORPORATION.	
		MATERIAL	SEE P/L
REVISION 10	MODELED IN SOLIDWORKS	TITLE	CE PUMP ASSEMBLY; HYPERJET 50
DRAWN BY JHO	STARTED 8-21-06	BASE PART NUMBER	020143
ENG SM	SCALE 1:6		5 OF 6

601 USE ITEM 18 (A-00825-7) CLAMP 2 PLACES (BOTH ENDS) OF MAIN PUMP SUCTION HOSE.

602 USE ITEM 102 (A-00825-31) CLAMP (FAR END) OF GEAR PUMP SUCTION HOSE.



MOTOR/PUMP ASSEMBLY DETAILS

THIRD ANGLE PROJECTION		THIS DRAWING IS THE PROPERTY OF FLOW INTERNATIONAL CORPORATION AND IS NOT TO BE COPIED OR REPRODUCED WITHOUT THE WRITTEN CONSENT OF FLOW INTERNATIONAL CORPORATION.	
	Flow	MATERIAL	SEE P/L
REVISION 10	MODELED IN SOLIDWORKS	TITLE	CE PUMP ASSEMBLY; HYPERJET 50
DRAWN BY JHO	STARTED 8-21-06	BASE PART NUMBER	020143
ENG SM	SCALE 1:5		6 OF 6

UNCONTROLLED COPY. USER IS RESPONSIBLE FOR VERIFYING THE CURRENT REVISION LEVEL.

NOTES:

101. ASSEMBLE PER MD-0047.

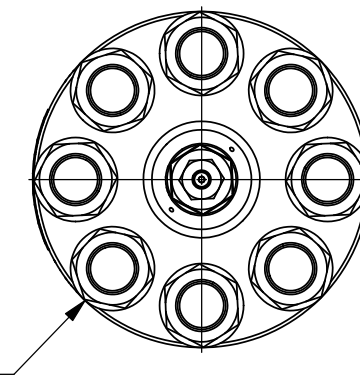
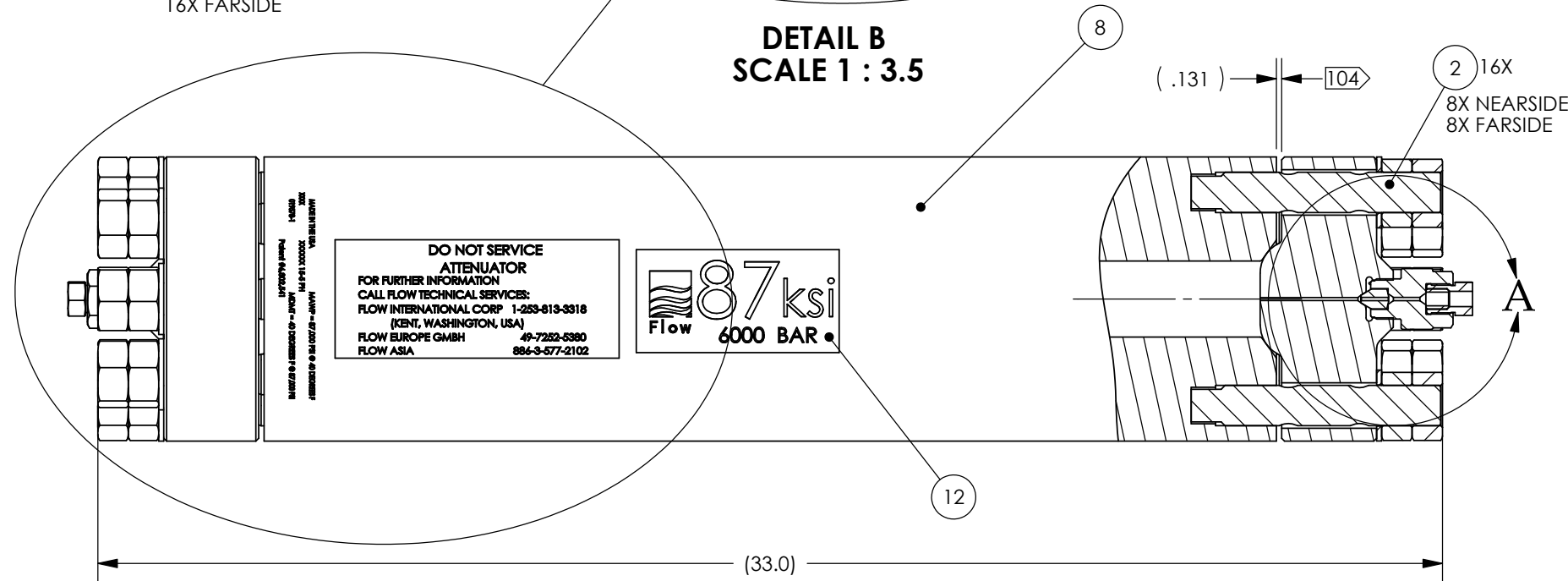
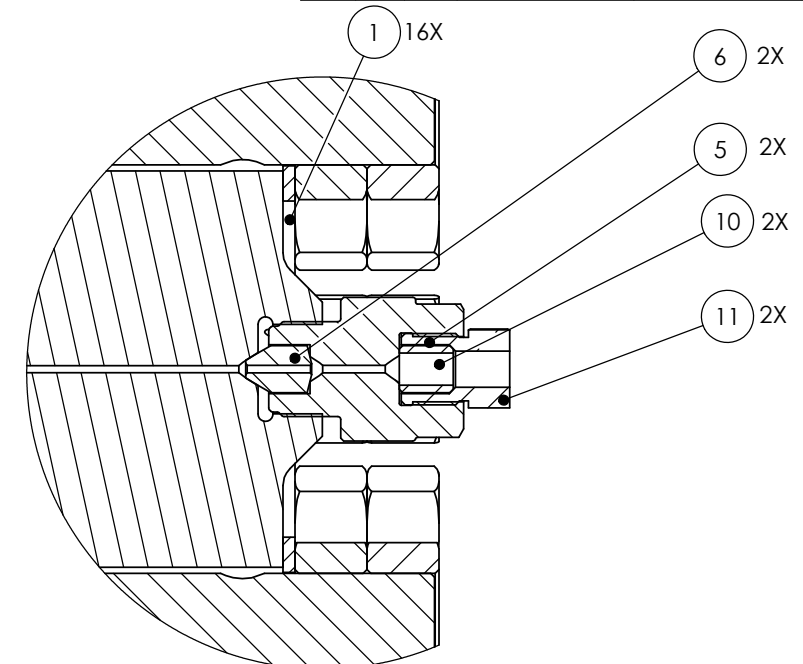
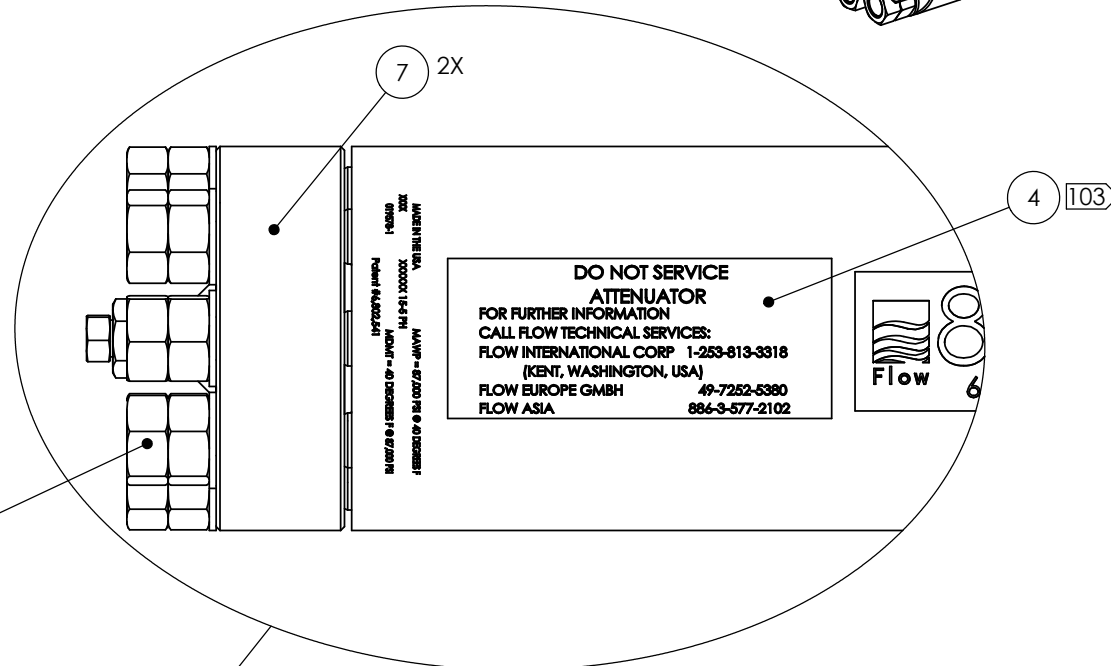
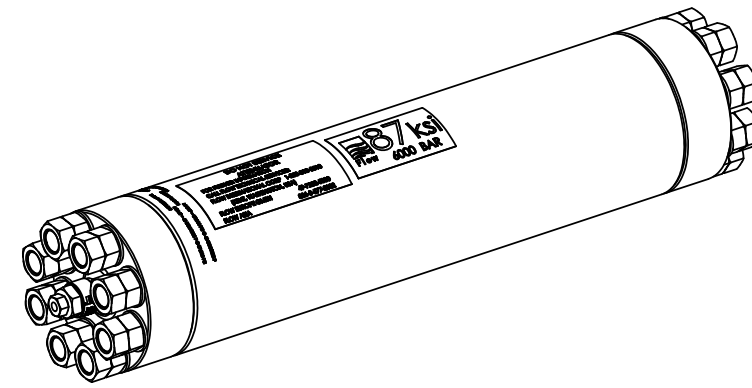
102. HYDROSTATIC TEST PER "WORKING DATA" TABLE AND MD-0100.

103. LOCATE LABEL NEXT TO LETTERING ON ATTENUATOR BODY AS SHOWN.

104. SPACING IS TYPICAL ON BOTH SIDES OF ATTENUATOR. DIMENSION SHOWN IS NOMINAL GAP WHEN INITIAL CONTACT BETWEEN END CAP AND BODY IS ACHIEVED (PRE-TORQUED CONDITION). THE FINAL GAP SHALL BE EVEN WITHIN .02" WITH A MINIMUM GAP OF .063".

105. ITEM NOT SHOWN.

ITEM	QTY	U/M	PART NUMBER	DESCRIPTION
1	16	EA	007100-1	WASHER
2	16	EA	007101-3	STUD
3	32	EA	007650-1	NUT
4	1	EA	009195-1	LABEL;DO NOT SERVICE
5	2	EA	012931-1	ADAPTER
6	2	EA	012952-1	PLUG;DOUBLE CONE
7	2	EA	019577-1	CAP;ATTENATOR
8	1	EA	019578-1	BODY;ATTENATOR
9	1	EA	A-2185	LUBRICANT;BLUE
10	2	EA	A-2838	GLAND;HIGH PRESSURE;3/8
11	2	EA	A-2839	COLLAR;HIGH PRESSURE;3/8
12	1	EA	019798-1	LABEL;87KSI-6000 BAR



WORKING DATA			
ENGLISH	U.S.	METRIC	GERMAN
RATED PRESSURE	87,000 PSI	6,000 BAR	BETRIEBSDRUCK
PROOF PRESSURE	108,750 PSI	7,500 BAR	PRUFDRUCK
RATED TEMP. (MIN)	40° F	5° C	BETRIEBS TEMP.
VOLUME	67.1 CU. IN.	1.10 LITER	INHALT

THIRD ANGLE PROJECTION		THIS DRAWING IS THE PROPERTY OF FLOW INTERNATIONAL CORPORATION AND IS NOT TO BE COPIED OR REPRODUCED WITHOUT THE WRITTEN CONSENT OF FLOW INTERNATIONAL CORPORATION.	
REVISION A	MODELED IN SOLIDWORKS	MATERIAL SEE P/L	
DRAWN BY G.WILLIAMS	STARTED 2-23-06	TITLE ATTENUATOR ASSEMBLY 87K (6000 BAR)	
ENG S.MORDRE	SCALE 1:8	BASE PART NUMBER 019579	1 OF 1

NOTES:

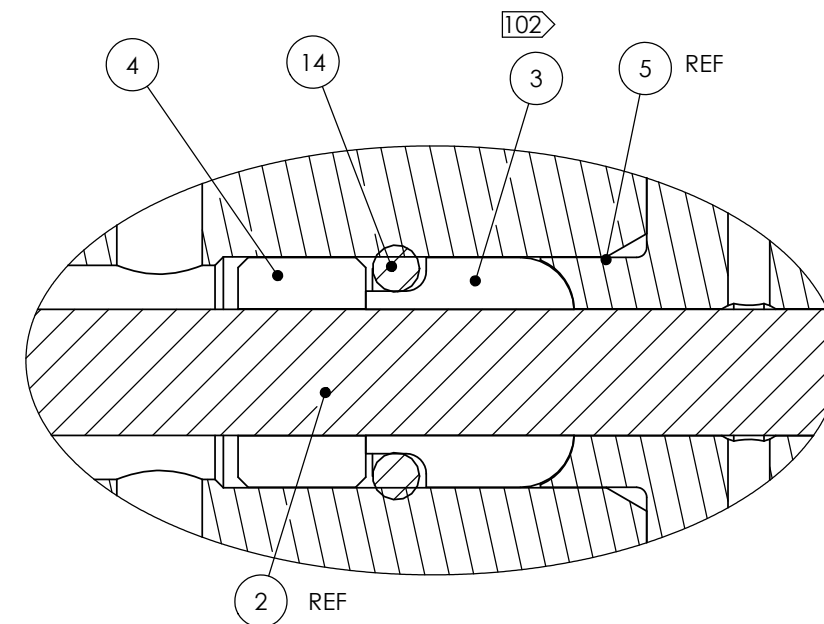
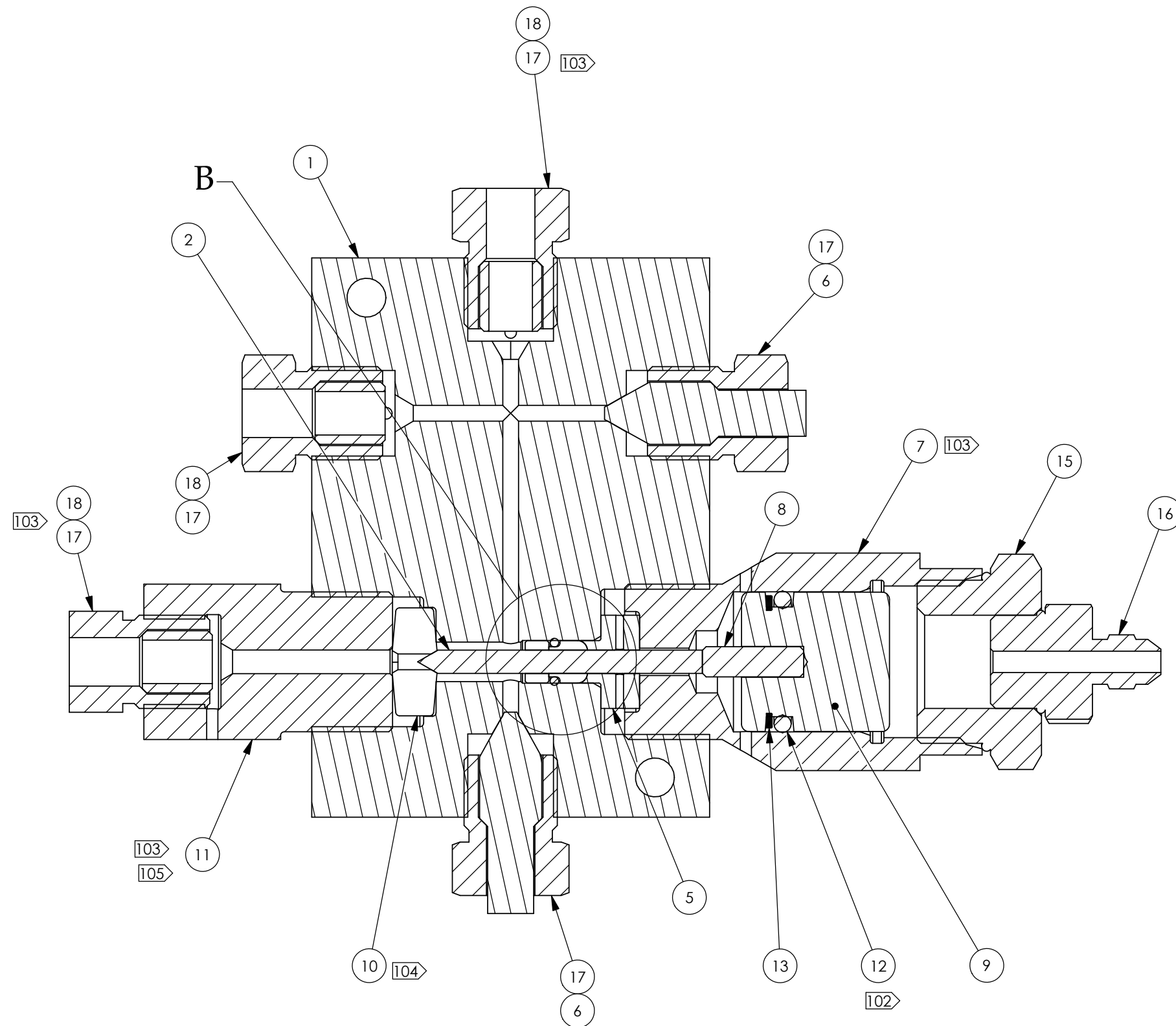
101. VALVE ASSEMBLY RATED FOR 6000 BAR (87 KPSI).

102 LUBRICATE O-RINGS WITH FOOD GRADE GREASE (A-4689).

103 APPLY BLUE LUBRICANT (A-2185) TO MALE THREADS.

104 APPLY BLUE LUBRICANT (A-2185) TO SEALING SURFACES.

105 TORQUE TO 125 FT/LBS.



DETAIL B
SCALE 3.5 : 1

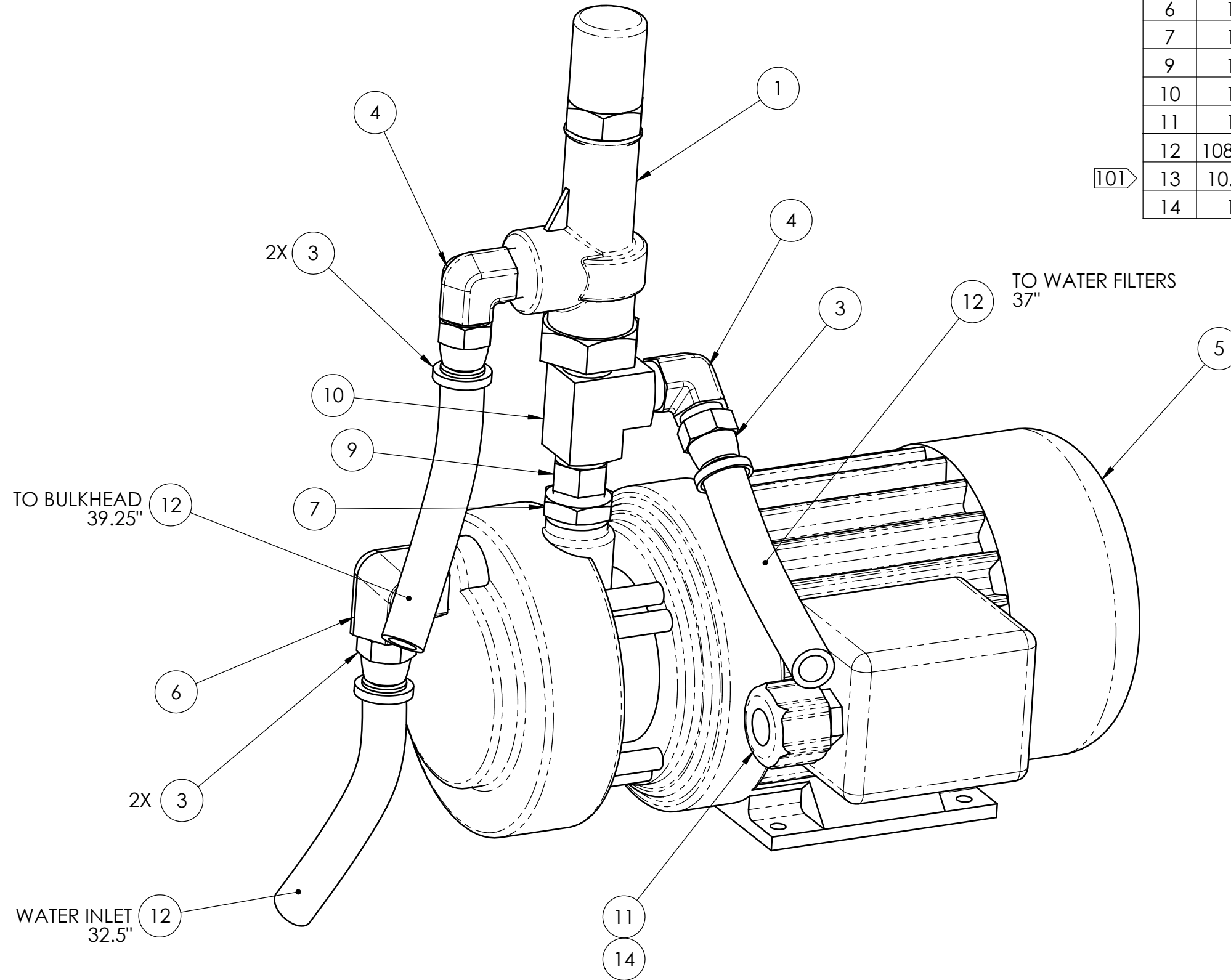
ITEM	QTY	U/M	PART NUMBER	DESCRIPTION
1	1	EA	020315-1	BODY;VALVE;ON/OFF & BLOW DOWN
2	1	EA	011746-1	POPPET;VALVE
3	1	EA	011747-1	SEAL;POPPET;VALVE
4	1	EA	011748-1	BEARING;POPPET;VALVE
5	1	EA	011749-1	BACK UP RING;VALVE
6	2	EA	012252-1	PLUG;3/8 H.P.;100K
7	1	EA	012761-1	BODY;ACTUATOR;BLOW DOWN VLV
8	1	EA	012762-1	INSERT;PISTON;HYD. BLOW DOWN
9	1	EA	012763-1	ACTUATOR;HYD. BLOW DOWN VALVE
10	1	EA	013051-1	SEAT;BLOW DOWN VALVE;25L
11	1	EA	013052-1	ADAPTER;BLOW DOWN VALVE;25L
12	1	EA	A-0275-212	O-RING;BUNA-N;70 DUR;NO.2-212
13	1	EA	A-0276-212	RING;BACK UP;NITRILE;.891 DIA
14	1	EA	A-0290-010	O-RING;HIGH PRESSURE;NO.2-010
15	1	EA	A-0635-11	REDUCER;EXPANDER;STL;1 OD
16	1	EA	A-0636-6	CONNECTOR;STR THD;STL;1/4" OD
17	5	EA	A-2838	GLAND;HIGH PRESSURE;3/8
18	3	EA	A-2839	COLLAR;HIGH PRESSURE;3/8

THIRD ANGLE PROJECTION		THIS DRAWING IS THE PROPERTY OF FLOW INTERNATIONAL CORPORATION AND IS NOT TO BE COPIED OR REPRODUCED WITHOUT THE WRITTEN CONSENT OF FLOW INTERNATIONAL CORPORATION.	
REVISION A	MODELED IN SOLIDWORKS	MATERIAL SEE BOM	
DRAWN BY B SCHUMAN	STARTED 6/10/06	TITLE BLEED DOWN VALVE ASSY; 87K	
ENG R WHITMER	SCALE 1:1	BASE PART NUMBER 020314	1 OF 1

101 ITEM NOT SHOWN.

ITEM	QTY	U/M	PART NUMBER	DESCRIPTION
1	1	EA	A-7230	VALVE;1/2"NPT ANGLE BP
3	5	EA	A-0817-5	CONNECTOR;37 DEG;SWVL;PUSH-LOK
4	2	EA	A-0714-14	ELBOW;MALE;BRS;1/2"OD;1/2 NPTF
5	1	EA	A-12629	CE PUMP;REGENERATIVE TURBINE
6	1	EA	A-0714-15	ELBOW;MALE;BRS;1/2"OD;3/4 NPTF
7	1	EA	A-0656-13	BUSHING;RDCR;THD;BRS;3/4 X 1/2
9	1	EA	A-7294	NIPPLE;HEX
10	1	EA	A-7293	TEE;STREET
11	1	EA	A-0567-5	CONN;STRAIN RLF;LIQ TIGHT;1/2
12	108.75	IN	A-0796-3	HOSE;LOW PRESS;PUSH-LOK;1/2"ID
13	10.00	FT	A-0878-9	CORD;SO TYPE;600 VOLT;14/4
14	1	EA	A-0570-1	GASKET;SEALING;CONDUIT;1/2"

101



THIRD ANGLE PROJECTION 		THIS DRAWING IS THE PROPERTY OF FLOW INTERNATIONAL CORPORATION AND IS NOT TO BE COPIED OR REPRODUCED WITHOUT THE WRITTEN CONSENT OF FLOW INTERNATIONAL CORPORATION.		
		MATERIAL	SEE PARTS LIST	
REVISION A	MODELED IN SOLIDWORKS	TITLE BOOST PUMP ASSY; HYPERJET 50		
DRAWN BY JHO	STARTED 6-26-06			
ENG SM	SCALE 1:2	BASE PART NUMBER	020505	1 OF 1

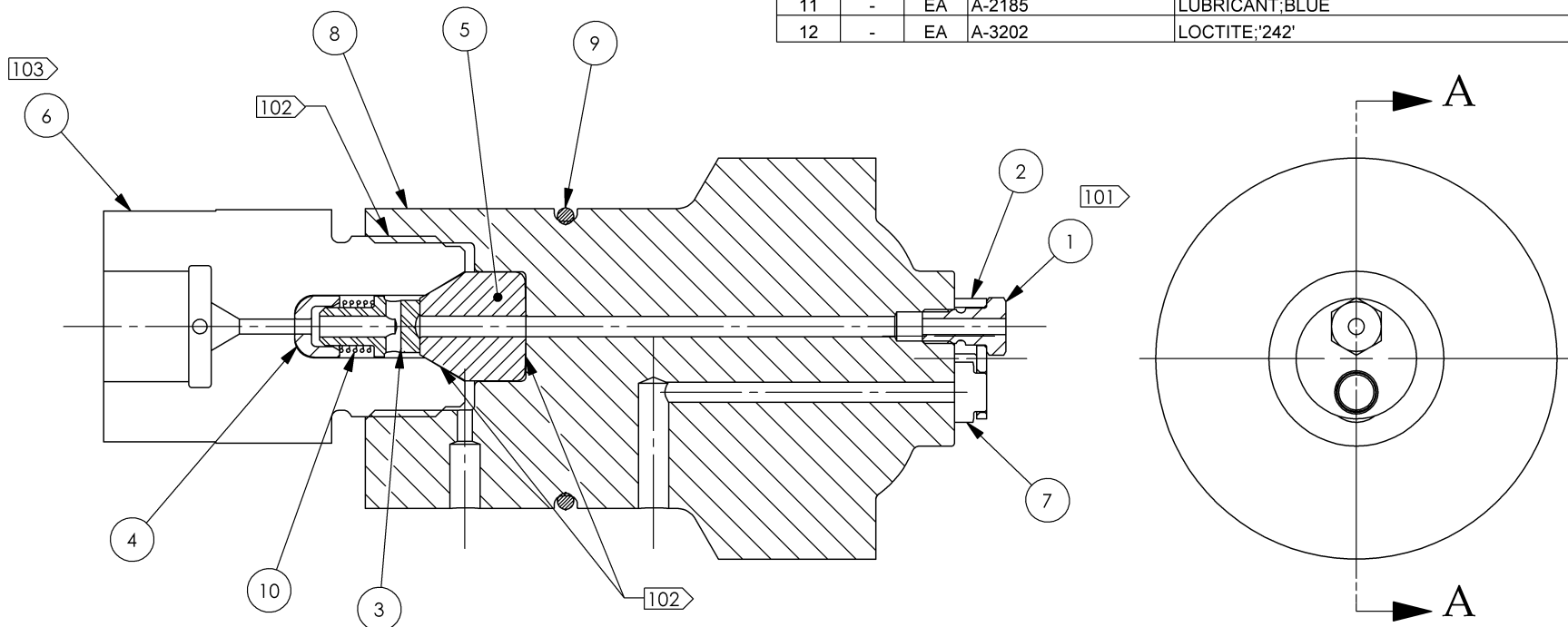
NOTES:

101 APPLY LOCTITE 242 (ITEM 12) TO THREADS AND TORQUE TO 40 IN. LBS.

102 APPLY BLUE LUBRICANT (ITEM 11) TO THREADS, CONED SURFACE OF ADAPTER (ITEM 6) AND TO FLAT SIDE OF SEAT (ITEM 5).

103 TORQUE TO 200 FT. LBS.

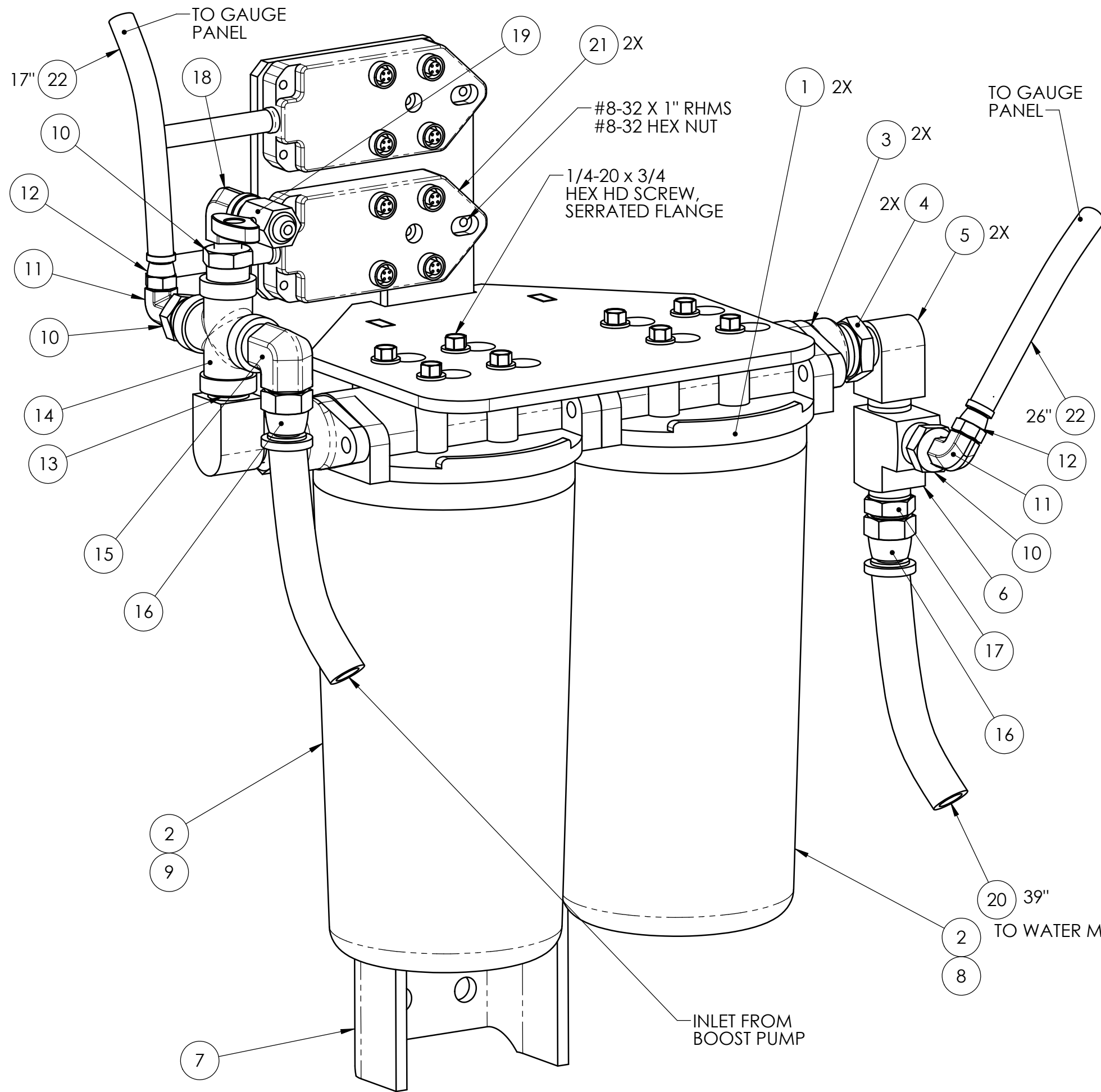
ITEM	QTY	U/M	PART NUMBER	DESCRIPTION
1	1	EA	004380-1	SCREW;RETAINING INLET CHCK VLV
2	1	EA	010564-1	SUPPORT;INLET CHK VLV;60-87K
3	1	EA	011309-1	POPPET;OUTLET;87K INTENSIFIER
4	1	EA	011516-1	SEAT;SPRING;OUTLET;87K INT
5	1	EA	014388-1	SEAT;CHECK VALVE;87K INT
6	1	EA	014389-1	ADAPTER;OUTLET;87K INT
7	1	EA	015384-1	POPPET; INLET
8	1	EA	020077-1	BODY;CHECK VALVE;87K INT PH2
9	1	EA	A-0275-131	O-RING;BUNA-N;70 DUR;NO.2-131
10	1	EA	A-1606	SPRING;COMPRESSION;SS
11	-	EA	A-2185	LUBRICANT;BLUE
12	-	EA	A-3202	LOCTITE;'242'



SECTION A-A

THIRD ANGLE PROJECTION		THIS DRAWING IS THE PROPERTY OF FLOW INTERNATIONAL CORPORATION AND IS NOT TO BE COPIED OR REPRODUCED WITHOUT THE WRITTEN CONSENT OF FLOW INTERNATIONAL CORPORATION.	
	Flow	MATERIAL	SEE BOM
REVISION A	MODELED IN SOLIDWORKS	TITLE	CHECK VALVE ASSY
DRAWN BY K.MADDEN	STARTED 5/2/06		87K INT PH2
ENG J.HOPKINS	SCALE 1:1	BASE PART NUMBER	020071
			1 OF 1

UNCONTROLLED COPY. USER IS RESPONSIBLE FOR VERIFYING THE CURRENT REVISION LEVEL.



ITEM	QTY	U/M	PART NUMBER	DESCRIPTION
1	2	EA	A-6059	HEAD;FILTER
2	2	EA	A-6060	BOWL;FILTER
3	2	EA	A-6058	ADAPTER;3/4 NPT;FILTER BOWL
4	2	EA	A-0656-13	BUSHING;RDCR;THD;BRS;3/4 X 1/2
5	2	EA	A-7291	ELBOW;STREET
6	1	EA	A-7293	TEE;STREET
7	1	EA	020401-1	WATER FILTER MTG BRACKET;6050
8	1	EA	A-1449	FILTER;CARTRIDGE;.45 MICRON
9	1	EA	A-1555	FILTER CARTRIDGE;1 MICRON
10	3	EA	A-0656-8	BUSHING;RDCR;THD;BRS;1/2 X 1/4
11	2	EA	A-0714-4	ELBOW;MALE;BRS;1/4"OD;1/4 NPTF
12	2	EA	A-0817-1	CONNECTOR;37 DEG;SWVL;PUSH-LOK
13	1	EA	A-0666-4	NIPPLE;CL;BRS;1/2 NPT;1-1/8 LG
14	1	EA	A-0523-4	CROSS;BRONZE 125 LBS;1/2 NOM
15	1	EA	A-0714-14	ELBOW;MALE;BRS;1/2"OD;1/2 NPTF
16	2	EA	A-0817-5	CONNECTOR;37 DEG;SWVL;PUSH-LOK
17	1	EA	A-0713-14	CONN;MALE;BRS;1/2" OD;1/2 NPTF
18	1	EA	A-0652-3	ELBOW;STREET;BRASS;1/4
19	1	EA	A-4309	DRAIN COCK;1/4" NPT;BRASS
20	39	IN	A-0796-3	HOSE;LOW PRESS;PUSH-LOK;1/2"ID
21	2	EA	A-21375-1	BLOCK;MULTIPORT;I/O;4 PORT
22	43	IN	A-0796-1	HOSE;LOW PRESS;PUSH-LOK;1/4"ID

UNCONTROLLED COPY. USER IS RESPONSIBLE FOR VERIFYING THE CURRENT REVISION LEVEL.

THIRD ANGLE PROJECTION 		THIS DRAWING IS THE PROPERTY OF FLOW INTERNATIONAL CORPORATION AND IS NOT TO BE COPIED OR REPRODUCED WITHOUT THE WRITTEN CONSENT OF FLOW INTERNATIONAL CORPORATION.	
		MATERIAL SEE PARTS LIST	
REVISION A	MODELED IN SOLIDWORKS	TITLE	
DRAWN BY JHO	STARTED 7-10-06	WATER FILTER ASSY; HYPERJET 50	
ENG SM	SCALE 1:2.1	BASE PART NUMBER	020552
			1 OF 1

NOTES:

① LUBE TIE ROD THREADS AND BOTH SIDES OF WASHER WITH ANTI-SEIZE.

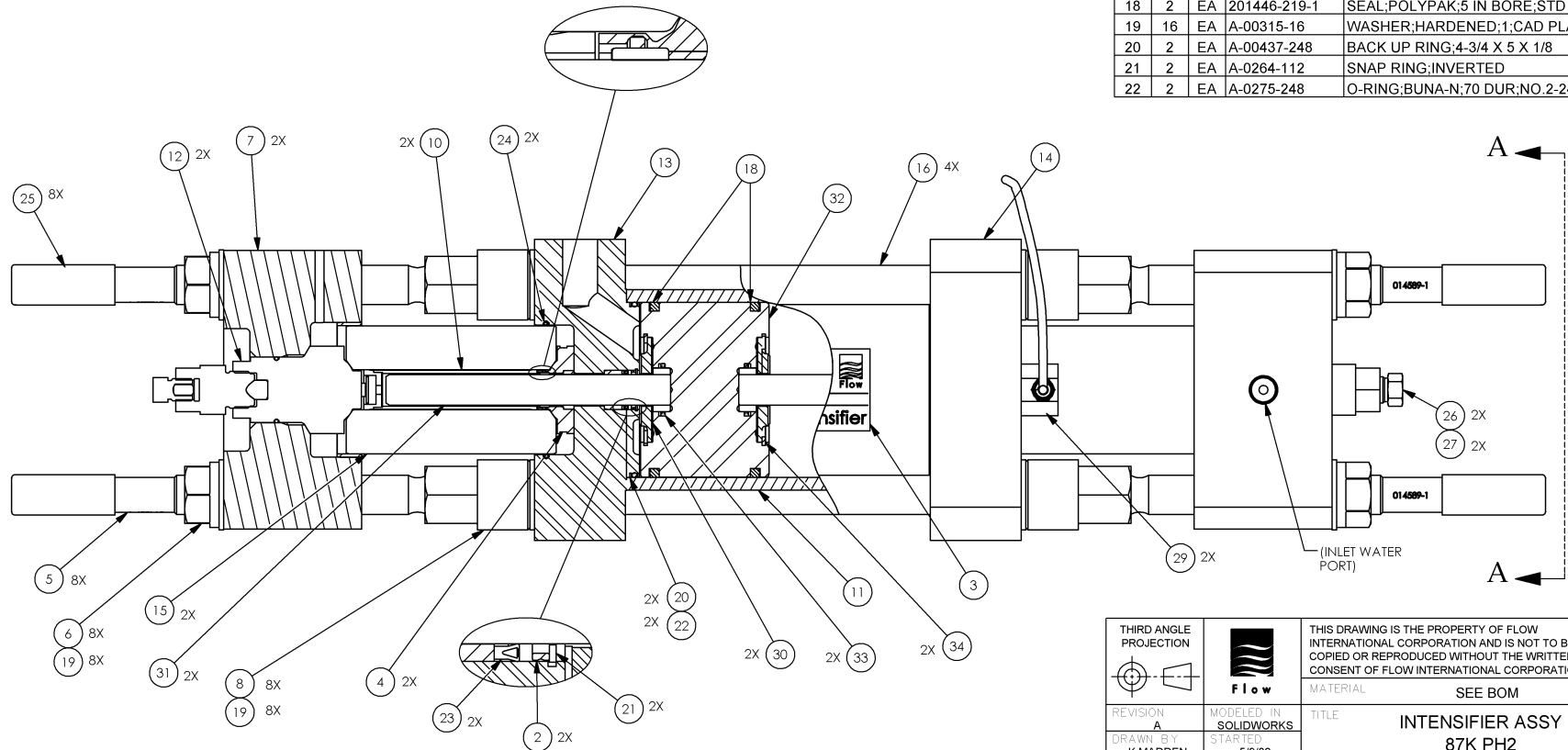
102. ASSEMBLE PER MD-0120 AND MD-0104.

103. APPROXIMATE WEIGHT: 325 LBS.

104. ASSEMBLE PISTON (ITEMS 30 THRU 34) PER AP-1025.

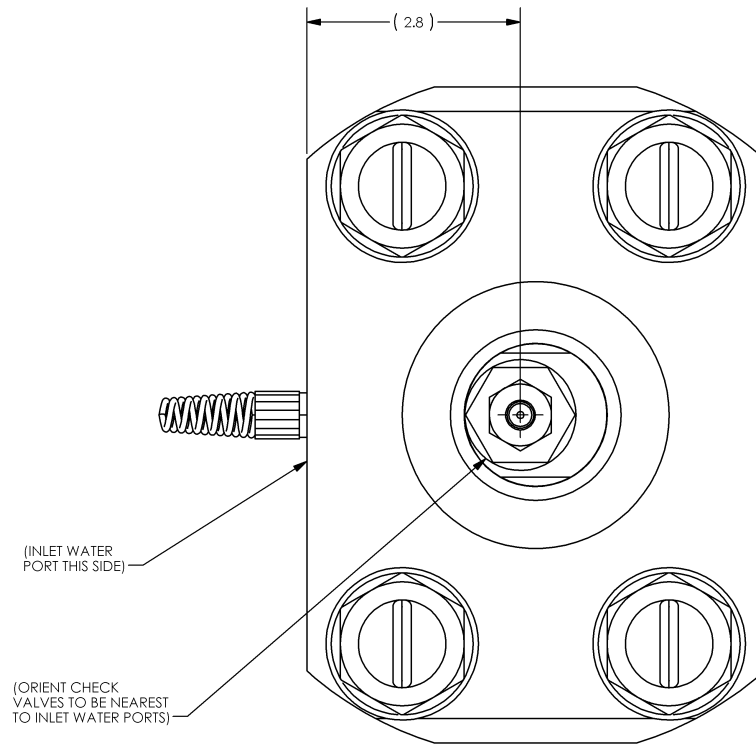
PART NO.	DESCRIPTION
020070-1	INTENSIFIER,87K PH2;TESTED
020070-10	INTENSIFIER,87K PH2;UNTESTED

ITEM	-10	U/M	PART NUMBER	DESCRIPTION	ITEM	-10	U/M	PART NUMBER	DESCRIPTION
23	2	EA	A-11275	SEAL;ROD;7/8 ID	2	2	EA	010276-1	SPACER;OIL SEAL;60K
24	2	EA	A-15034-2	O-RING;METRIC;94MM ID;3MM CS	3	1	EA	012612-1	LABEL;SERIAL NO;6000 BAR
25	8	EA	A-20347-1	CAP; VINYL	4	2	EA	040015-1	SEAL CARTRIDGE;87K-2.0 INTENS
26	2	EA	A-2838	GLAND;HIGH PRESSURE;3/8	5	8	EA	014589-1	TIE ROD;END CAP;87K-2.0 INT.
27	2	EA	A-2839	COLLAR;HIGH PRESSURE;3/8	6	8	EA	014597-1	NUT;TIE ROD;87K-2.0 INT.
29	2	EA	B-8345-2	SENSOR ASSY;ELEC SHIFT;80&100K	7	2	EA	014817-1	END CAP;INTENSIFIER;87K-2.0
30	2	EA	007029-1	SPACER;BISCUIT;60K	8	8	EA	014840-1	NUT;TIE ROD;INT;87K-2.0
31	2	EA	010253-1	PLUNGER ASSY;60K;CERAMIC	10	2	EA	020595-1	FILLER TUBE ASSY;87K INT;CARTR
32	1	EA	020080-1	BISCUIT;PISTON;87K INT PH2	11	1	EA	019975-1	CYLINDER;LOW PRESS;87K INT;PH2
33	2	EA	A-00251-18	T-SEAL;ROD;1-1/4 ID X 1-1/2 OD	12	2	EA	020071-1	CHECK VALVE ASSY;87K INT PH2
34	2	EA	A-0270-300	SNAP RING;INTERNAL	13	1	EA	020072-1	ENDBELL ASSY;LEFT;87K INT PH2
					14	1	EA	020074-1	ENDBELL ASSY;RIGHT;87K INT PH2
					15	2	EA	020592-1	HP CYLINDER;87K INT;CARTRIDGE
					16	4	EA	020078-1	TIE ROD;LOW PRESS;87K INT PH2
					18	2	EA	201446-219-1	SEAL;POLYPAK;5 IN BORE;STD
					19	16	EA	A-00315-16	WASHER;HARDENED;1;CAD PLATED
					20	2	EA	A-00437-248	BACK UP RING;4-3/4 X 5 X 1/8
					21	2	EA	A-0264-112	SNAP RING;INVERTED
					22	2	EA	A-0275-248	O-RING;BUNA-N;70 DUR;NO.2-248



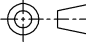

UNCONTROLLED COPY. USER IS RESPONSIBLE FOR VERIFYING THE CURRENT REVISION LEVEL.

THIRD ANGLE PROJECTION			THIS DRAWING IS THE PROPERTY OF FLOW INTERNATIONAL CORPORATION AND IS NOT TO BE COPIED OR REPRODUCED WITHOUT THE WRITTEN CONSENT OF FLOW INTERNATIONAL CORPORATION.	
REVISION A	MODELED IN SOLIDWORKS	MATERIAL	SEE BOM	
DRAWN BY K MADDEN	STARTED 5/9/06	TITLE	INTENSIFIER ASSY 87K PH2	
ENG J.HOPKINS	SCALE 3:9	BASE PART NUMBER	020070	1 OF 2



VIEW A-A

UNCONTROLLED COPY. USER IS RESPONSIBLE FOR VERIFYING THE CURRENT REVISION LEVEL.

THIRD ANGLE PROJECTION 	 Flow	THIS DRAWING IS THE PROPERTY OF FLOW INTERNATIONAL CORPORATION AND IS NOT TO BE COPIED OR REPRODUCED WITHOUT THE WRITTEN CONSENT OF FLOW INTERNATIONAL CORPORATION.	
REVISION A	MODELED IN SOLIDWORKS	MATERIAL SEE BOM	TITLE INTENSIFIER ASSY
DRAWN BY K MADDEN	STARTED 5/9/06	87K PH2	
ENG J HOPKINS	SCALE 1:1.5	BASE PART NUMBER 020070	2 OF 2