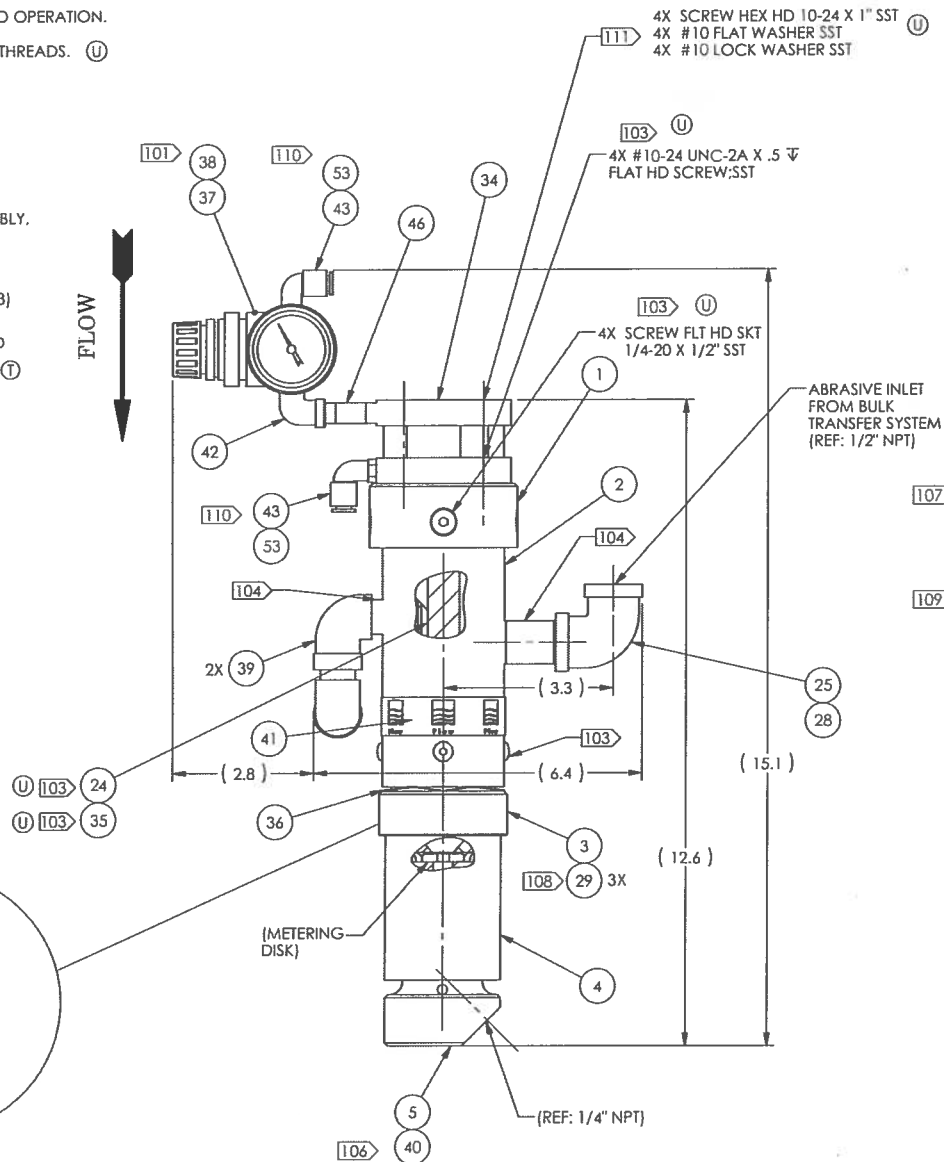


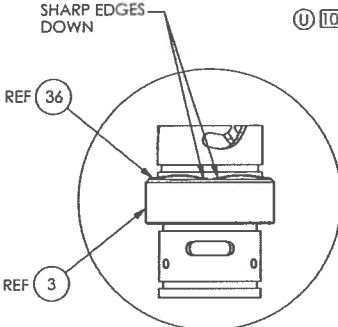
NOTES:

- 101 SET ITEM 38 AT 20 PSI MAX PRIOR TO OPERATION.
- 103 APPLY LOCTITE 242 TO INDICATED THREADS. (U)
- 104 APPLY TEFLON TAPE.
- 106 APPLY SILICONE TO ITEM 40.
- 107 ITEM NOT SHOWN.
- 108 APPLY SILICONE TOP O-RING.
- 109 PACKAGE WITH COMPLETE ASSEMBLY, USED ON FLYING BRIDGE.
- 110 DO NOT OVER TIGHTEN. (S) TIGHTEN ELBOW (ITEM 43) ONLY ENOUGH TO SEAT O-RING (ITEM 53) AND ENDURE AN AIR TIGHT SEAL.
- 111 INSTALL FASTENERS INTO THREADED HOLES IN ITEM 34 (AIR CYLINDER). (T)



ITEM	-4	-3	-2	-1	U/M	PART NUMBER	DESCRIPTION
1	1	-	1	-	EA	009922-1	CAP;MINI HOPPER;PASER3/ECL
2	1	-	1	-	EA	009925-1	MINI HOPPER;VALVE;PASER3/ECL
3	1	-	1	-	EA	009927-1	BODY;METERING VALVE;PASER3/ECL
4	1	-	1	-	EA	009928-1	SHROUD;PASER3/ECL
5	1	-	1	-	EA	009929-1	DIVERTER;LOCKING;PASER3/ECL
24	1	-	1	-	EA	009932-1	ROD;PLUNGER;PASER3/ECL
25	-	-	1	-	EA	A-12093-4	NIPPLE;1/2NPT X 2";SCH80PVC
28	-	-	1	-	EA	A-0192-4	ELBOW;90 DEG;1/2"
29	3	-	3	-	EA	A-0275-133	O-RING;BUNA-N;70 DUR;NO.2-133
34	1	-	1	-	EA	A-11072	CYLINDER;AIR;1-1/2 BORE X .75
35	1	-	1	-	EA	A-11073	BUMPER;RUBBER
36	1	-	1	-	EA	A-11077	SPRING;WAVE;SST
37	1	-	1	-	EA	A-11093	CE GAUGE;AIR;0-60 PSI;1/8 BACK
38	1	-	1	-	EA	A-11142	REGULATOR;AIR;1/8
39	2	-	2	-	EA	A-4516	ELBOW;STREET;SST;3/8 NPT
40	1	-	1	-	EA	A-0275-126	O-RING;BUNA-N;70 DUR;NO.2-126
41	1	-	1	-	EA	010014-1	LABEL;MINI HOPPER;PASER3/ECL
42	2	-	1	-	EA	A-0652-1	ELBOW;STREET;BRASS;1/8
43	2	-	2	-	EA	A-19291-1	ELBOW;1/8' UNI THD X 6MM TUBE
46	-	-	1	-	EA	A-0591-11	NIPPLE;PIPE;BRS;1/8 NPT;1-1/2"
47	-	1	-	1	EA	010295-1	METERING DISK KIT
49	1	-	-	-	EA	A-0652-10	ELBOW;STREET;BRASS;1/2
50	1	-	-	-	EA	A-0665-2	NIPPLE;PIPE;HEX;BRASS;1/8 NPTF
51	-	1	-	-	EA	009930-4	METERING VLV ASSY;WMC;W/O DISK
52	-	-	-	1	EA	009930-2	METERING VLV ASSY;W/O DISK KIT
53	2	-	2	-	EA	A-0275-009	O-RING;BUNA-N;70 DUR;NO.2-009

ENGINEERING REFERENCE	
ASSY NO	DESCRIPTION
009930-1	W/METERING DISK KIT
009930-2	W/O METERING DISK KIT
009930-3	WMC W/METERING DISK KIT
009930-4	WMC W/O METERING DISK KIT



-1 & -2 CONFIGURATION

THIRD ANGLE PROJECTION		THIS DRAWING IS THE PROPERTY OF FLOW INTERNATIONAL CORPORATION AND IS NOT TO BE COPIED OR REPRODUCED WITHOUT THE WRITTEN CONSENT OF FLOW INTERNATIONAL CORPORATION.	
		MATERIAL	SEE BOM
DESIGNED BY	DATE	TITLE	
U	SOLIDWORKS	METERING VALVE ASSEMBLY	
DESIGNED BY	DATE	PART NUMBER	
R SMITH	8/14/95	009930	
DESIGNED BY	DATE	PAGE	
MASSENBURG	2-5	1 OF 2	

UNCONTROLLED COPY. USER IS RESPONSIBLE FOR VERIFYING THE CURRENT REVISION LEVEL.

