



# How to Repair an AccuStream On/Off Valve

## Using Kit #11328

These instructions will demonstrate how to replace components of an AccuStream On/Off Valve with kit #11328

Written By: Adam Dumas



**TOOLS:**


- 13/16" wrench (1)
- 7/8" wrench (1)
- 1" wrench (1)

**PARTS:**

- Repair Kit # 11328 (1)
- Needle #11562 (Included in Kit) (1)
- Needle Bearing #12178 (included in kit) (1)
- High-Pressure Valve Seal #11043 (included in kit) (1)
- Accu Seat #11010 (included in kit) (1)
- Actuator #12828 (1)
- Adapter #13841 (1)
- Valve Body #11033 (1)
- Blue Goop #11111 (1)
- Isopropyl Alcohol (1)

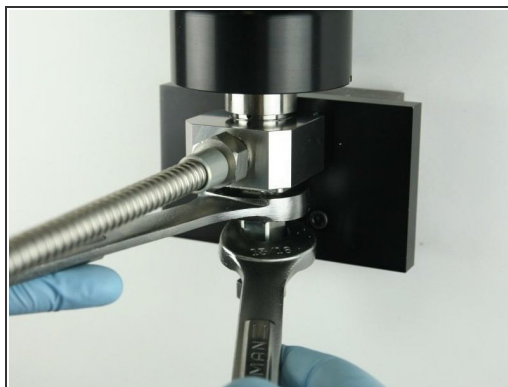
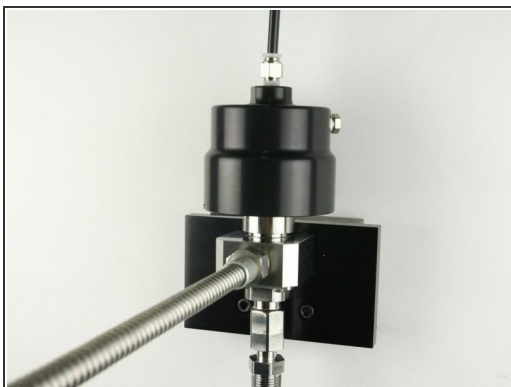
## Step 1 — How to Repair an AccuStream On/Off Valve Using Kit #11328



 Always make sure all high-pressure water has been removed from valve by following machine manufacturers' safety instructions. Failure to do so can cause severe injury or death.

- Turn OFF all water pressure to the on/off valve.
- Turn the on/off valve ON to raise the [needle](#) from the [seat](#).

## Step 2



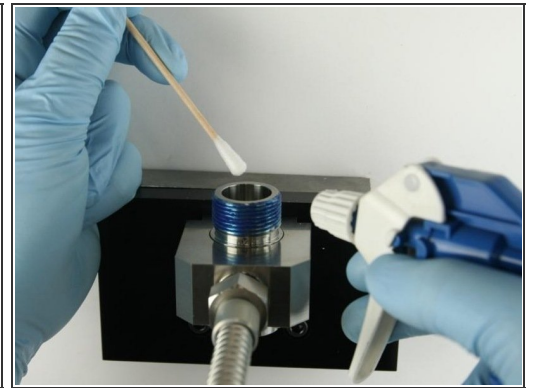
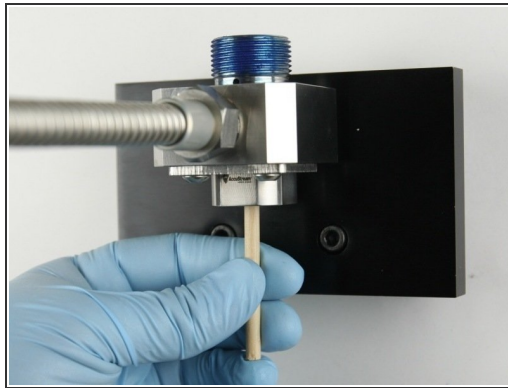
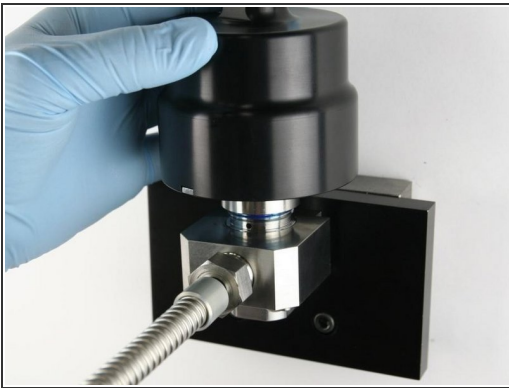
- The components can be replaced with the [valve body](#) in the mounting collar.
- Loosen the [adapter](#) from the valve body using a 1" and 13/16" wrench.
- Unthread the adapter from the valve body.

### Step 3



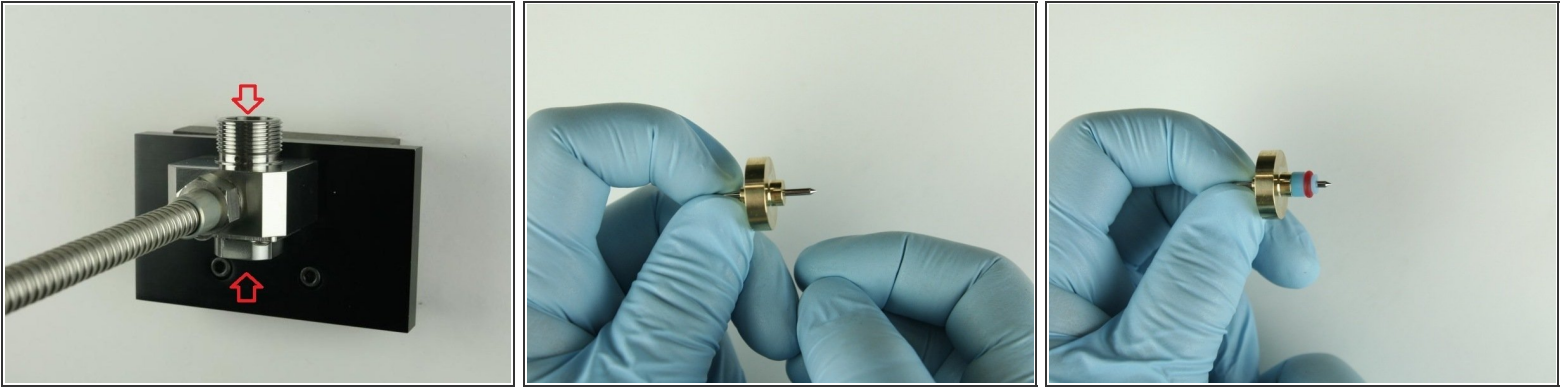
- Turn the air to the actuator OFF.
- Disconnect the air line from the [actuator](#).
- Loosen the actuator from the valve body using a 7/8" wrench.

### Step 4



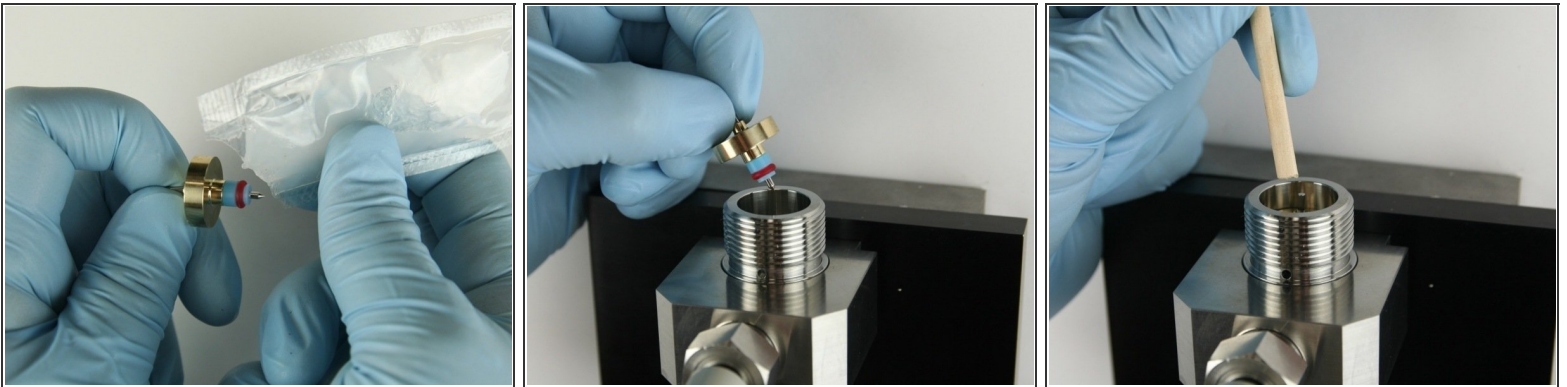
- Unthread the actuator from the valve body.
- Remove all the valve components using the included dowel.
- Thoroughly clean the interior/exterior of the valve body before replacing the components.

## Step 5



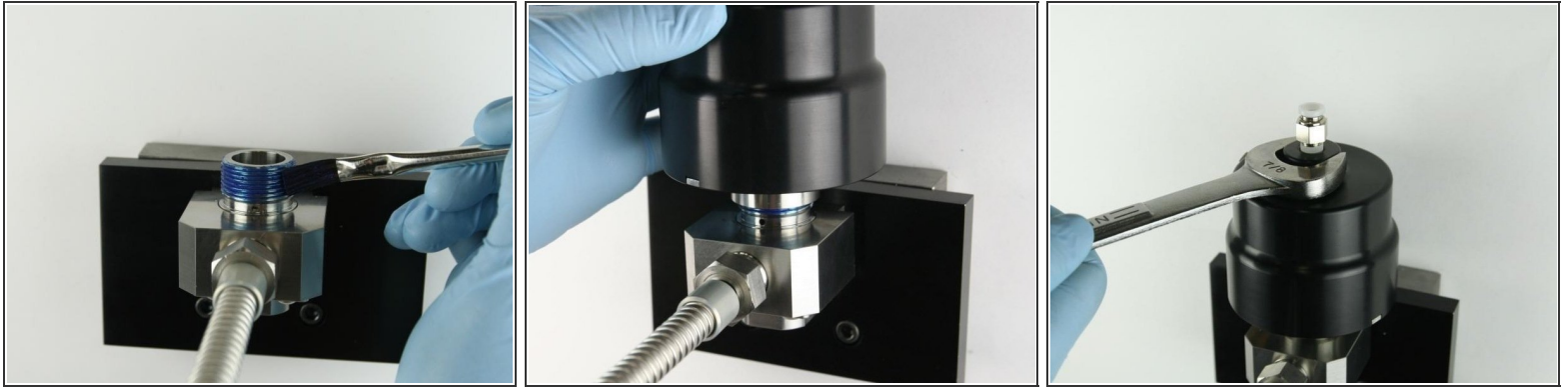
- Make sure the top and bottom of the bore for cracks/blemishes. If excessive wear or cracks are visible, replace the [valve body](#).
- Slide the [needle bearing](#) onto the needle point with the smaller stepped side away from the needle point.
- Slide the [high-pressure valve seal](#) onto the needle point with the O-ring away from the needle bearing.

## Step 6



- Apply a high-pressure lubricant to the outside diameter of the high-pressure valve seal.
- Put the needle point at the top of the valve body.
- Use the dowel to push the needle in the valve body until the needle bearing bottoms out.

## Step 7



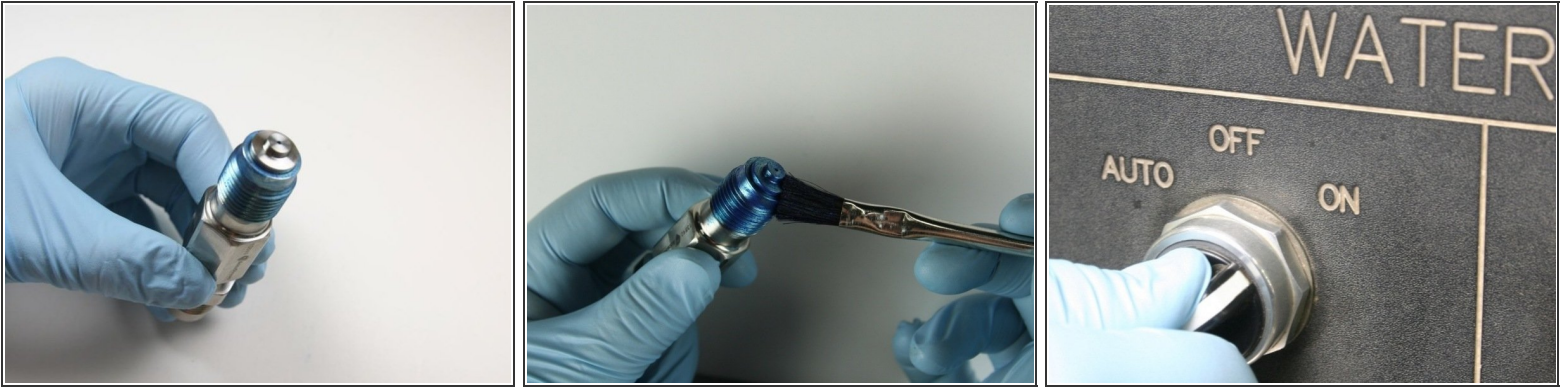
- Apply [Blue Goop](#) to the top threads of the valve body.
- Thread the actuator onto the valve body.
- Tighten the actuator to the valve body using a 7/8" wrench.

## Step 8



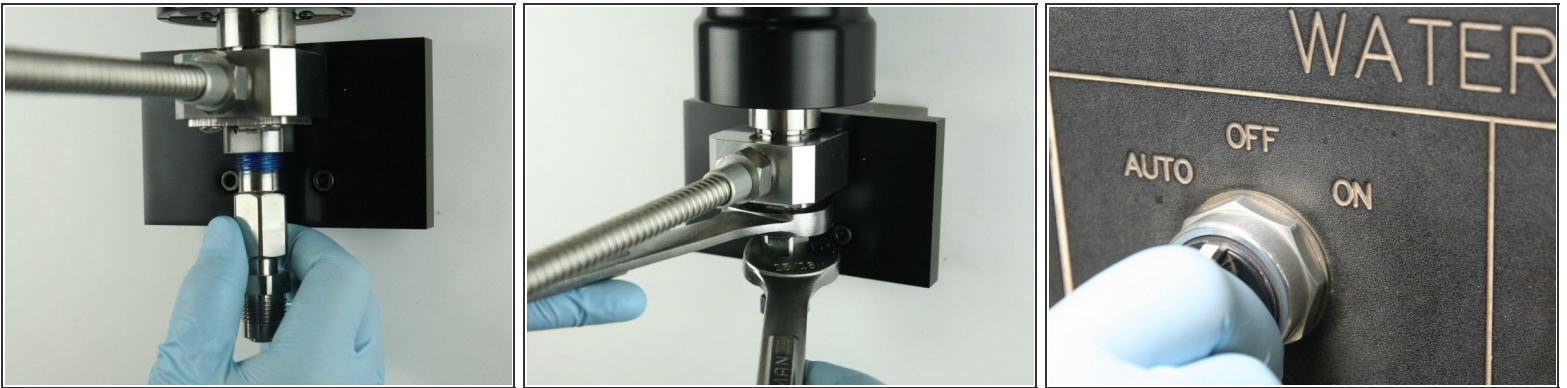
- Reconnect the air line to the top of the actuator.
- Clean the adapter of all Blue Goop with isopropyl alcohol or a similar cleaning agent.
- Reapply Blue Goop to the top threads and to the top of the adapter.

## Step 9



- Put the seat at the top of the adapter with the flat side towards the adapter.
- Apply Blue Goop to the top of the seat.
- Turn the air to the actuator ON.

## Step 10



- Thread the adapter into the valve body.
- Tighten the adapter into the valve body using a 1" and 13/16" wrench.
- Turn the air to the actuator OFF.

**Step 11**

- Apply water pressure to the valve assembly to verify that there are no leaks
- Quickly cycle the valve on and off a few times to purge the system of all contaminants before installing the cutting head.
- Reinstall the cutting head and continue the cutting process.