



WORLDWIDE DISTRIBUTION

AUSTRALIA

GMA Garnet Pty Ltd (Head Office)
Tel (sales) : +61 8 9287 3250
Fax (sales) : +61 8 9287 3251
Email: marc@garnetsales.com

EUROPE

GMA Garnet (Europe) Hamburg
Tel : +49 40 3014-095
Fax : +49 40 327091
Email: hoefner@gma-garnet.de

UNITED ARAB EMIRATES

GMA Garnet (Middle East) FZE
Tel : +971 4 883 7577
Fax : +971 4 883 7571
Email: gma@emirates.net.ae

UNITED STATES

GMA Garnet (USA) Corporation
Tel : +1 832 243 9300
Fax : +1 832 243 9301
Email: usasales@gmaamericas.com

SPAIN

REXPO Cutting & Blasting Solutions
Tel : +34 913209784
www.rexpo.es
Email: comercial@rexpo.es

SAUDI ARABIA

Garnet Arabia Company Ltd
Tel: +966 3 363 5591
Fax : +966 3 363 5592
Email: soni@garnetsales.com

UNITED KINGDOM

GMA Garnet Sales Office
Tel : +44 (0) 160 683 6233
Fax : +44 (0) 160 683 6610
Email: sales@gmagarnet.co.uk



EXCLUSIVE DISTRIBUTOR



GMA GARNET GROUP

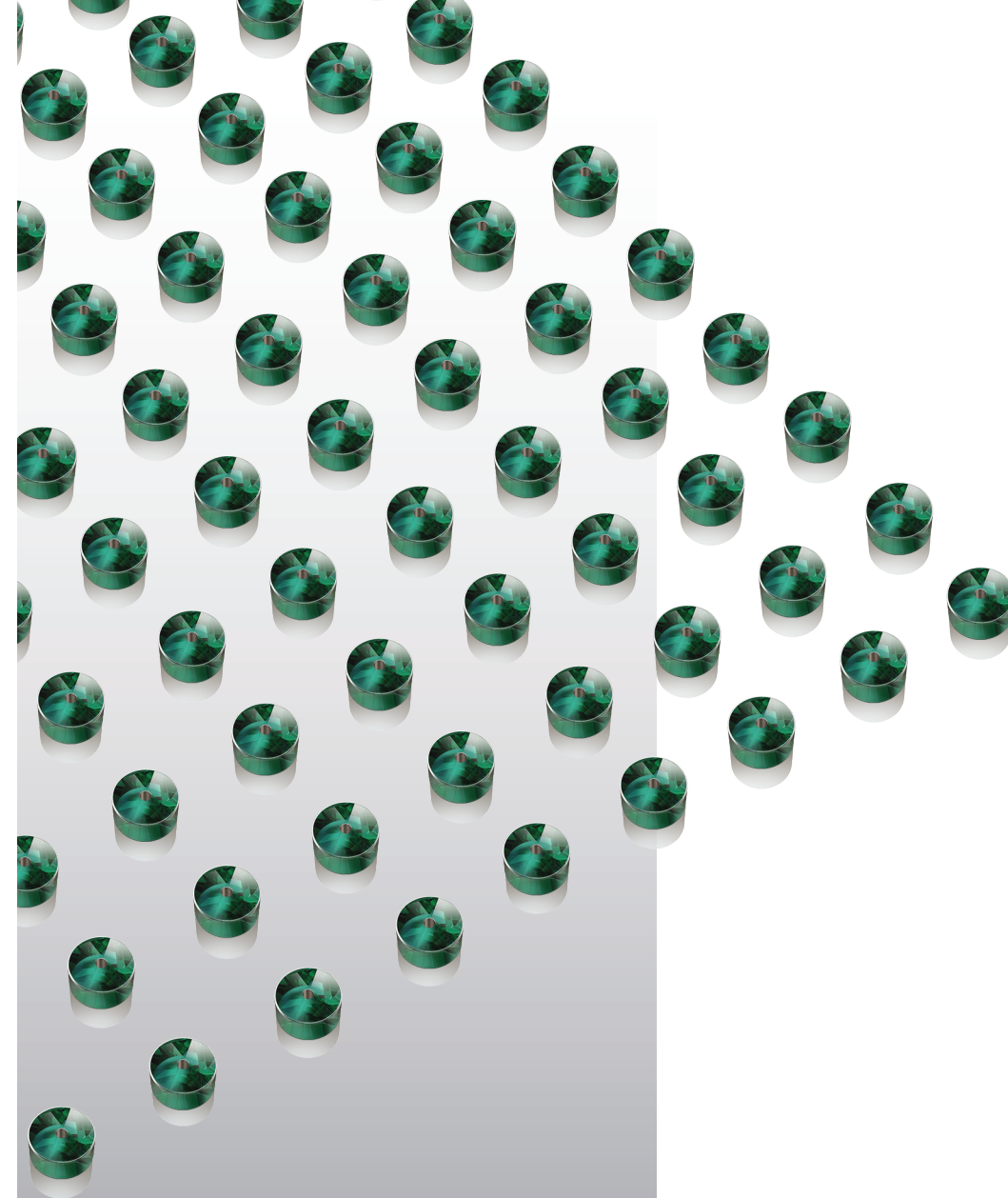
when your abrasive matters!

INDUSTRY STANDARD SUPERIOR PERFORMANCE ABRASIVE

The GMA Garnet Group is the global market leader of high quality waterjet cutting, cleaning and blasting garnet abrasives.

GMA owns and operates the world's largest industrial garnet mining and processing facility in Western Australia as well as its new Hard Rock garnet mine in Montana, USA.

The Group has now added the exclusive global distributorship of the tetraCORE™ products to its list of other value added products for the waterjet and surface preparation markets.



EXCLUSIVE DISTRIBUTOR

GMA GARNET GROUP

when your abrasive matters!

www.garnetsales.com



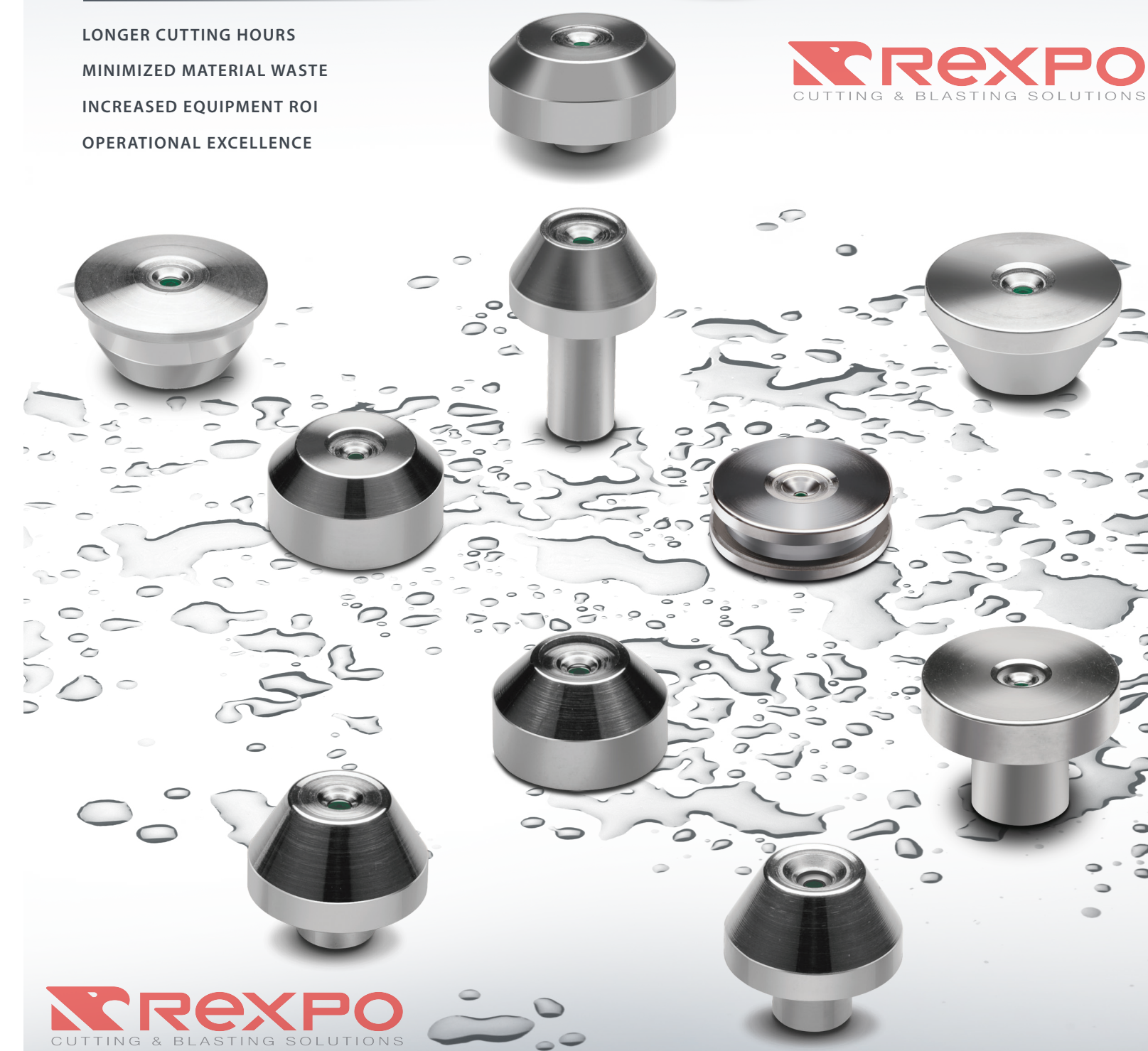
DIAMOND TECHNOLOGY INNOVATIONS
www.waterjetdiamonds.com



PRODUCT GUIDE

WATERJETS UPGRADED WITH TETRACORE PROVIDE:

- LONGER CUTTING HOURS
- MINIMIZED MATERIAL WASTE
- INCREASED EQUIPMENT ROI
- OPERATIONAL EXCELLENCE



GMA GARNET GROUP

when your abrasive matters!

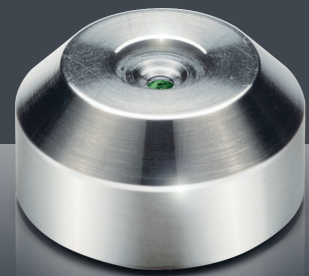


MANUFACTURED WITH

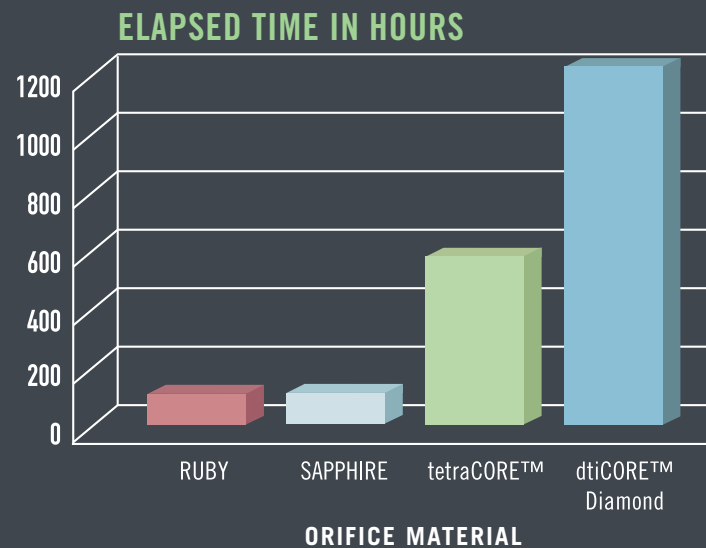


PERFORMANCE ADVANTAGES
UPGRADE YOUR RUBY OR SAPPHIRE

- 10-15X LONGER LIFE
- GREATER JET STREAM CONSISTENCY
- REDUCED OPERATING COSTS
- EXCELLENT RELIABILITY
- LESS SUPERVISION REQUIRED



WATERJET ORIFICE PERFORMANCE
WHAT DOES YOUR DOWNTIME REALLY COST?



NEW MATERIAL GRADE
FIRST NEW ORIFICE MATERIAL IN 30 YEARS

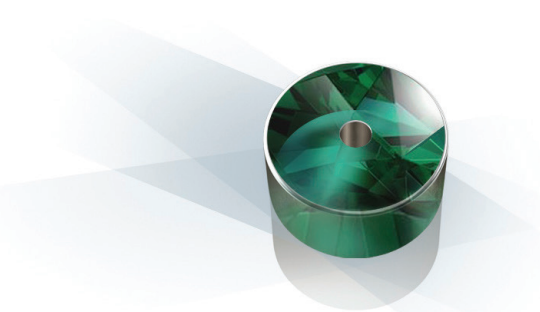
Precision engineered to offer predictable performance, tetraCORE™ waterjet orifices make waterjets a viable option for almost any cutting application. Manufactured under tightly controlled conditions, tetraCORE™ approaches the hardness and wear resistance of diamond, while offering prices comparable to ruby and sapphire. Extensive testing of tetraCORE™'s durability consistently delivered 500 or more cut hours—a full fifteen times longer than ruby and sapphire orifices could deliver.

tetraCORE™'s robust, tetrahedrally bonded structure will resist erosion, chipping and fracturing, while reducing operating costs.

RETAIL PRICE STRUCTURE

Order individually or in convenient 5 and 10 piece packs to mix and match your tetraCORE™ assembly styles and sizes to meet your waterjet needs.

Pricing may vary by location. Contact a distributor near you for a quotation.

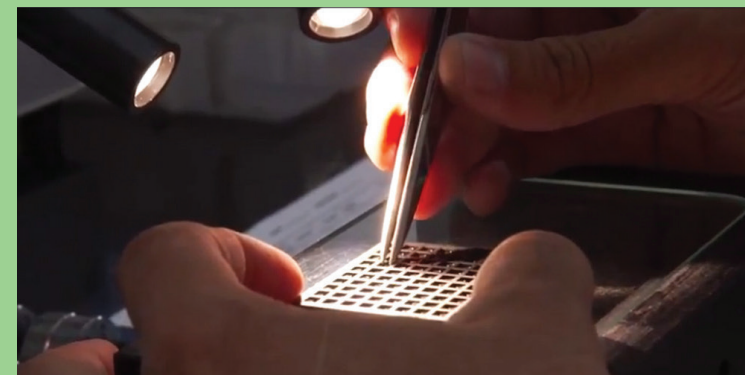


CUSTOMIZE YOUR ORDER
tetraCORE™ ORDERING
CHOOSE YOUR STYLE AND SIZE

TA- -

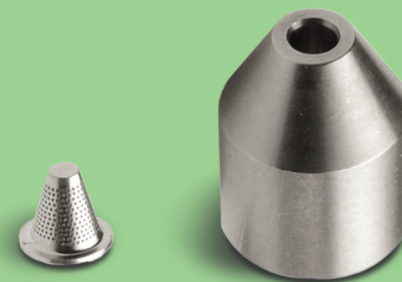
STYLE
 SIZE

STANDARD ORIFICE SIZE RANGE: .005"-.018"



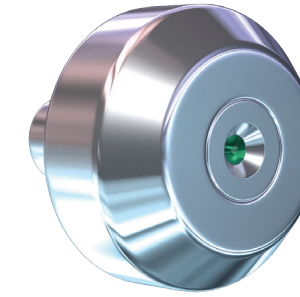
DIAMOND GUARD FILTER ORDERING
PROTECT YOUR ORIFICE

- MA-FIL-03**
3/8" Diamond Guard Filter and Insert Combo
- M-FIL-01**
3/8" Diamond Guard Filter
- M-ADP-06**
3/8" Diamond Guard Insert

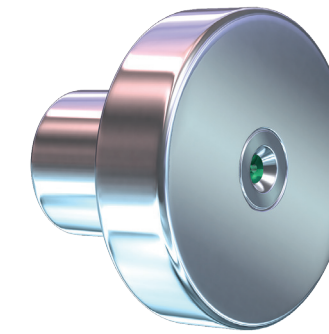


For filter housing options, see parts catalogue.

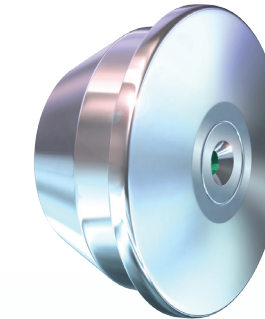
TA-05
Similar to:
STANDARD
COMADUR TYPE 18



TA-06
Similar to:
PERM II
COMADUR TYPE 30



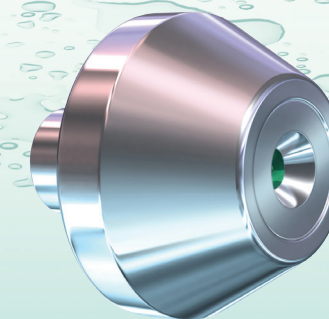
TA-14
Similar to:
P-V
COMADUR TYPE 26



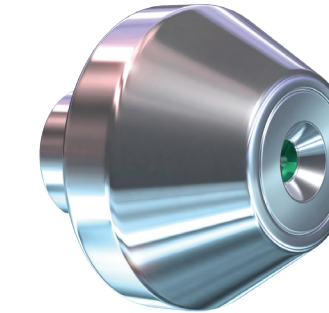
TA-16
Similar to:
P-III
COMADUR TYPE 23



TA-28
Similar to:
A-LINE
COMADUR TYPE 27



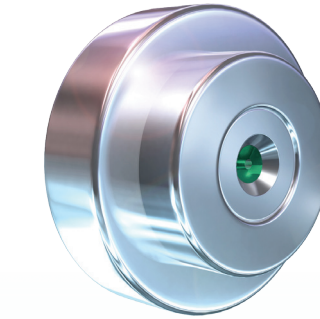
TA-30
Similar to:
COMADUR TYPE 25



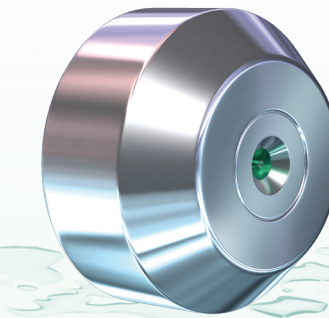
TA-58
Similar to:
LONG STEM
COMADUR TYPE 10



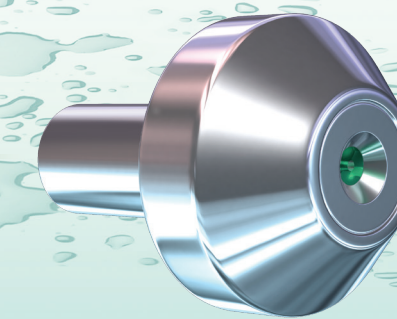
TA-62
Similar to:
P-II STEP
COMADUR TYPE 14



TA-20
Similar to:
P-IV



TA-57
Similar to:
LOW MASS



GMA and dti™ are in no way affiliated with the above mentioned manufacturers. Descriptions are for convenience only.

PROTECT YOUR INVESTMENT
THE DIAMOND GUARD FILTER

THE PROBLEM

- PLUGGED OR CHIPPED ORIFICES
- PREMATURE WEAR OF COMPONENTS
- REDUCED JET STREAM COHERENCY
- INEFFICIENT CUTTING

Within the internal components of every waterjet system, errant particles become dislodged and travel through the high pressure lines. These particles end up at the waterjet orifice, impacting and potentially damaging the orifice edge.

When debris is larger than the hole in the orifice, the orifice assembly becomes plugged or partially blocked.

THE SOLUTION

The dti™ Diamond Guard Filter is designed to simply and effectively capture debris larger than .0055" (0,14mm) from impacting or blocking the orifice. Any particles small enough to pass through the DG Filter will also exit safely through the hole of the waterjet orifice.

DG Filters and Adapters allow for ease of installation in any waterjet system's 1/4" or 3/8" high pressure lines. The DG Filter is installed as close to the waterjet orifice assembly as possible, with the most common location being in the HP fitting at the on/off valve assembly.

When paired with any dti™ orifice assembly, the dti™ Diamond Guard Filter ensures precision cutting throughout every job.