



# PCV replacement - using #1-18882

PCV Assembly replacement. 1-18882



---

## INTRODUCTION

This is a how-to guide for replacement of 1-18882 Hyplex Prime PCV Assembly from Accustream.

---



### PARTS:

- [1-18882](#) (1)
-

## Step 1 — Safety Precautions

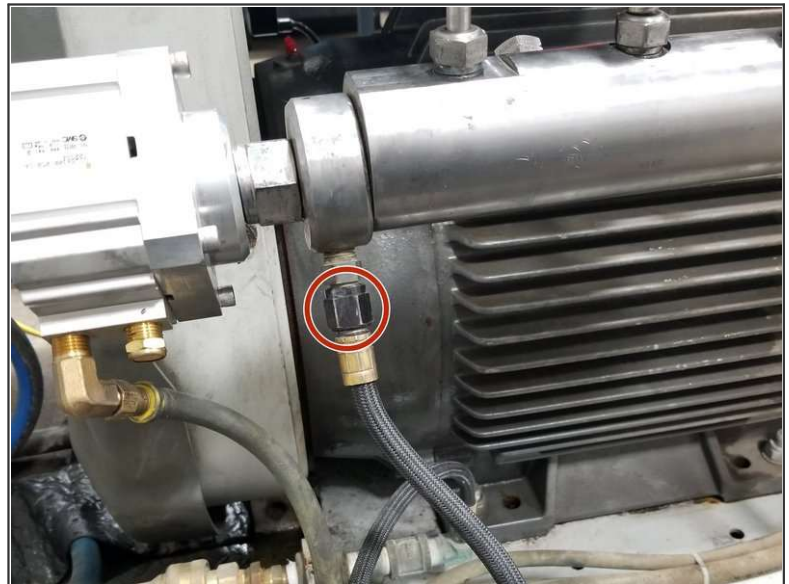
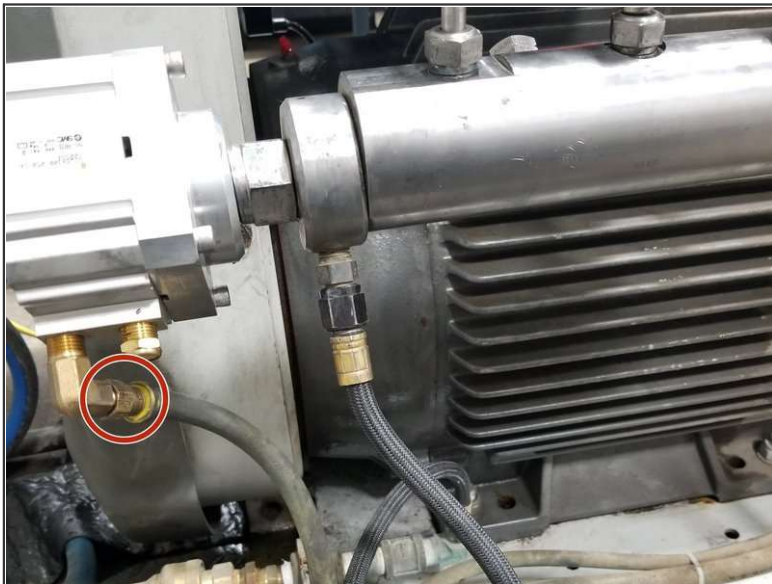


# WARNING

Follow Lockout/Tagout procedures and remove all stored energy prior to performing any maintenance

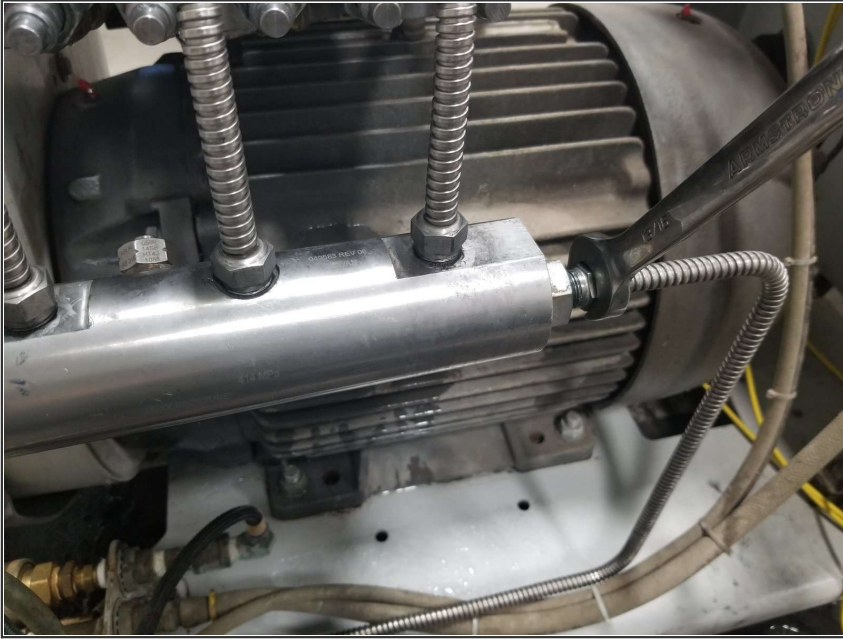
- Refer to original equipment manufacturer's safety and maintenance instructions. Failure to do so could result in injury or death.
- **Always remove all stored energy and lock out equipment before beginning any work.**

## Step 2 — Remove hoses



- Disconnect air line from actuator
- Disconnect PCV drain line

### Step 3



- Remove high-pressure tube from manifold using a 13/16" open end wrench
- Disconnect the three high-pressure tubes from the manifold using 13/16" open end wrench while supporting the manifold

### Step 4



- With manifold removed from pump, place manifold in a heavy bench vise
- Remove the PCV body using a 1-1/4" (32 mm) wrench

## Step 5 — PCV Replacement



- Apply blue lubricant to threads and both faces of the PCV adapter
- Install new PCV Ring onto new PCV Seat, and insert PCV Poppet into seat. Insert PCV assembly into PCV body
- Thread manifold onto PCV Adapter. Torque to 190 ft-lb (258 N-m)