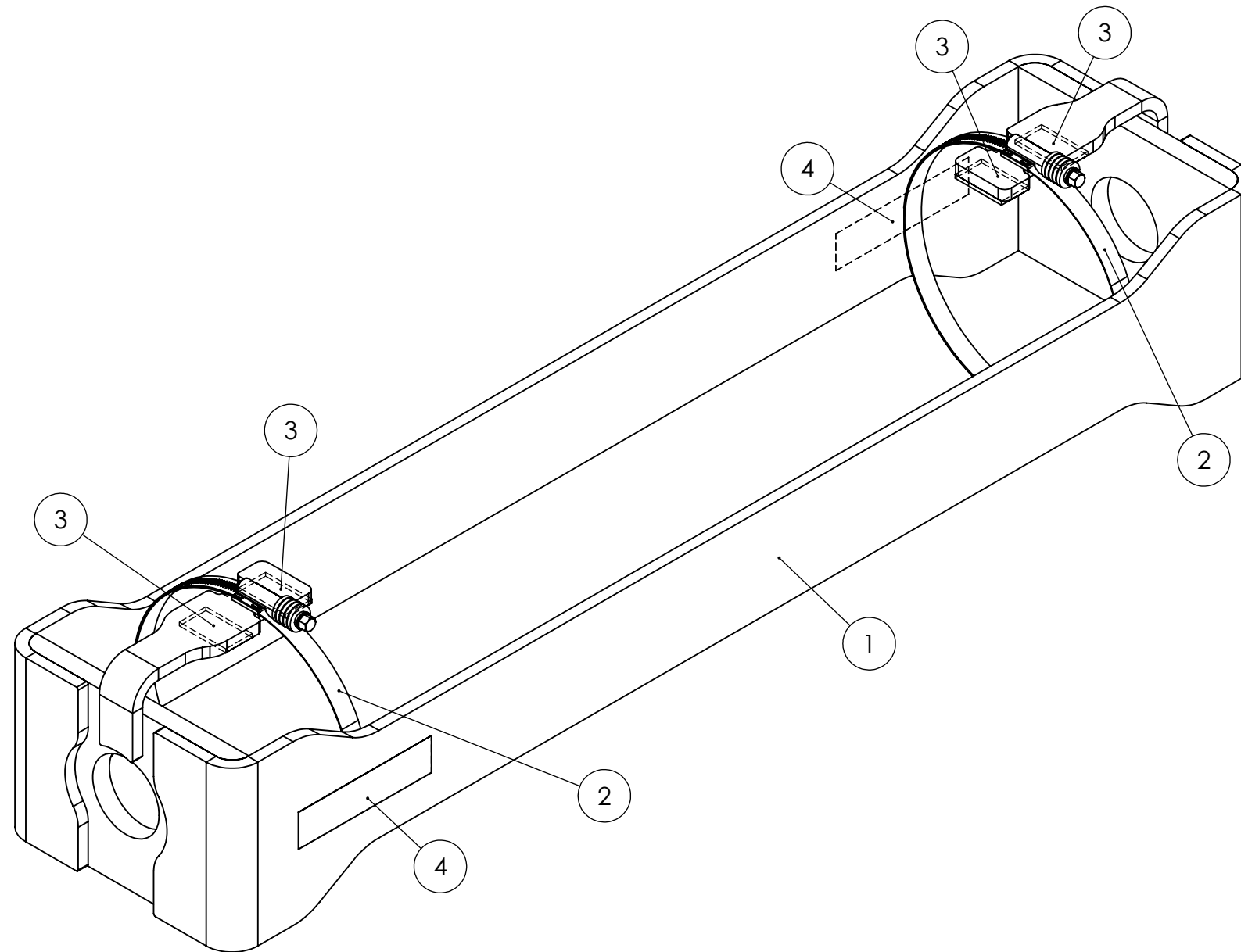


REVISIONS

REV	ECO	DATE	DRAWN	DATE	APPROVED
A	25700	8-9-16	MWW	08/31/16	SEV



ITEM NO.	PART NUMBER	DESCRIPTION	QTY.
1	16306	WELDMENT, 2L ATTENUATOR GUARD	1
2	5281K31	CLAMP, 2L ATTENUATOR GUARD	2
3	16309	RUBBER PAD, 2L ATTENUATOR GUARD	4
4	16321	WARNING LABEL; 2L ATTENUATOR SHIELD	2
5	16322	3/8 COMBINATION WRENCH	1
6	809630	GDE: ATTEN SHLD INSTL GDE FOR HYPRECISION 60S & 75S	1

HIGHLY CONFIDENTIAL  
PROPRIETARY INFORMATION



TITLE:  
2L ATTENUATOR GUARD ASSEMBLY - FIELD  
INSTALLATION

THIS DRAWING AND ALL INFORMATION  
CONTAINED THEREON IS CONSIDERED  
PROPRIETARY AND MAY NOT BE USED FOR  
MANUFACTURING OR FABRICATION PURPOSES  
WITHOUT PERMISSION FROM HYPER THERM, INC.

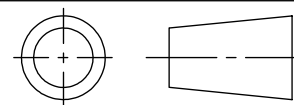
-TOLERANCES-  
UNLESS OTHERWISE SPECIFIED  
DIMENSIONS IN INCHES

ANGULAR: MACH ± 1 BEND ± 1  
ONE PLACE DECIMAL ± .05  
TWO PLACE DECIMAL ± .015  
THREE PLACE DECIMAL ± .005  
BREAK AND DEBURR  
ALL EDGES .015 MAX

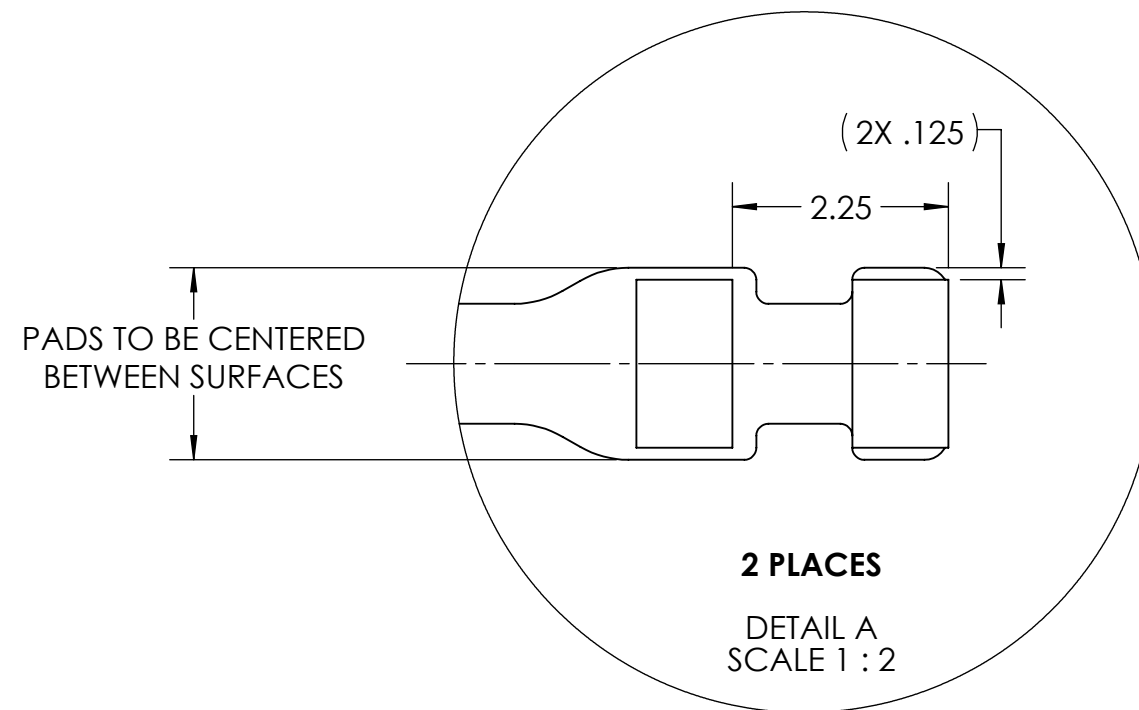
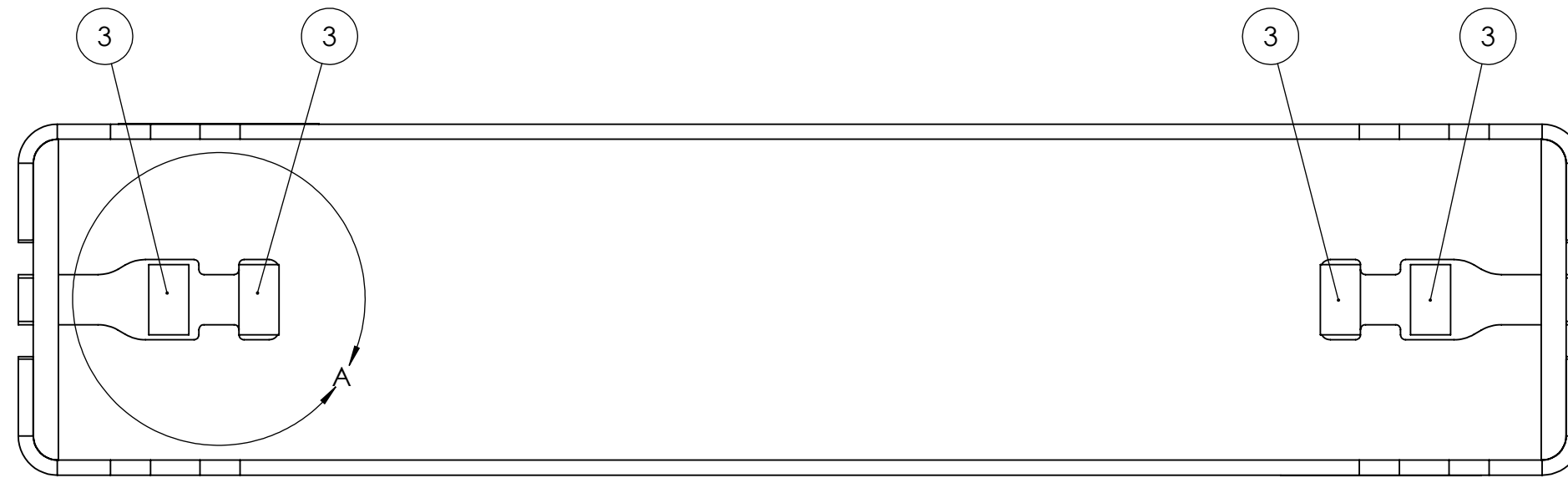
	NAME	DATE	MATERIAL
DRAWN	SEV	7/1/16	SEE PARTS LIST
CHECKED	-	-	HARDNESS
ENG APPR.	-	-	WEIGHT

SHEET	SCALE:	FINISH
1 OF 4	1:4	-
SIZE	DWG. NO.	REV
B	16320	A

NOTE:  
1. ITEMS 2, 3, 5, AND 6 TO BE PACKAGED IN CLEAR POLY BAG WITH GUIDE  
FACING OUT

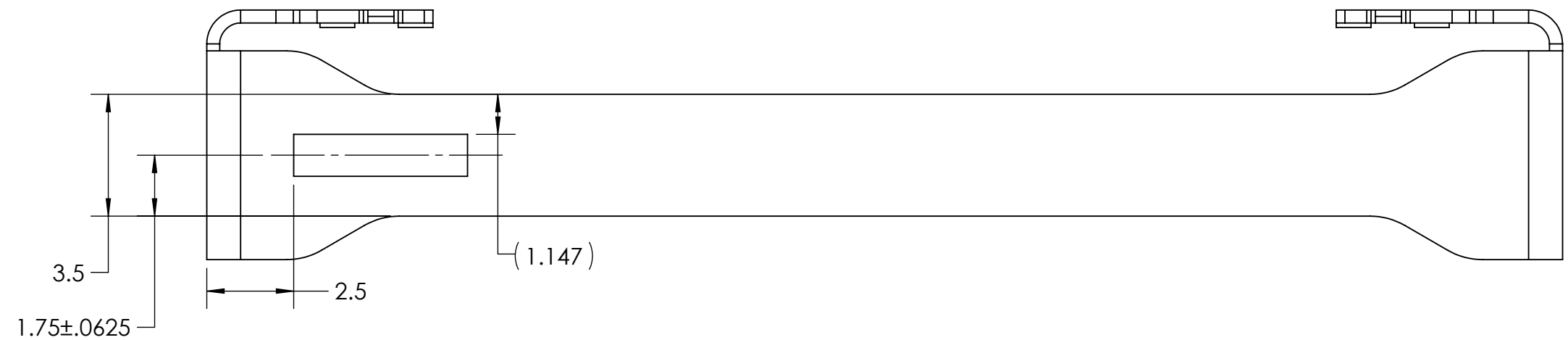
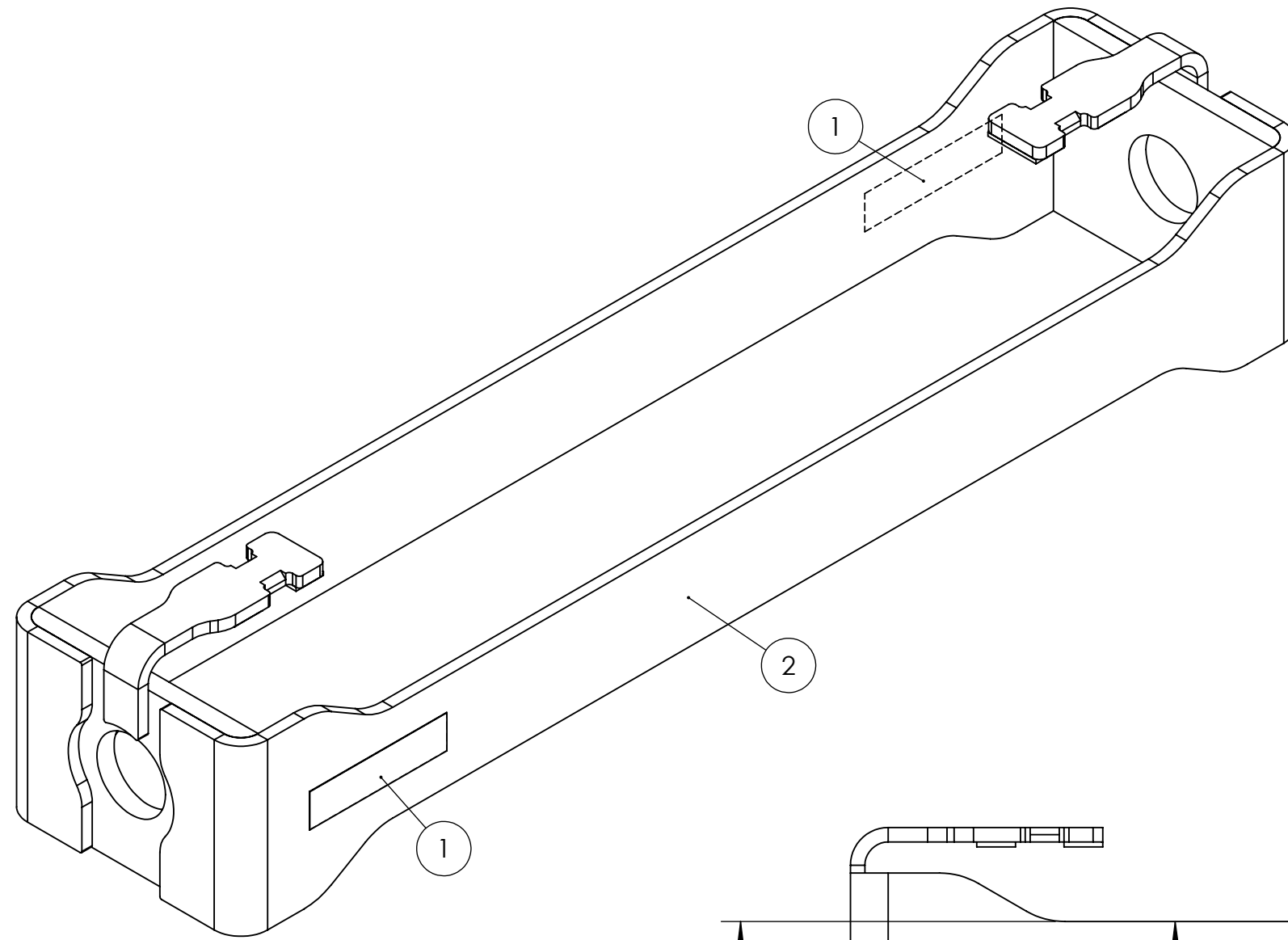


ITEM NO.	PART NUMBER	DESCRIPTION	QTY.
3	16309	RUBBER PAD, 2L ATTENUATOR GUARD	4



<b>HIGHLY CONFIDENTIAL PROPRIETARY INFORMATION</b>			TITLE: <b>2L ATTENUATOR GUARD ASSEMBLY - FIELD INSTALLATION</b>																		
			THIS DRAWING AND ALL INFORMATION CONTAINED THEREON IS CONSIDERED PROPRIETARY AND MAY NOT BE USED FOR MANUFACTURING OR FABRICATION PURPOSES WITHOUT PERMISSION FROM HYPERTHERM, INC.	<b>-TOLERANCES- UNLESS OTHERWISE SPECIFIED DIMENSIONS IN INCHES</b>  ANGULAR: MACH ± 1 BEND ± 1 ONE PLACE DECIMAL ± .05 TWO PLACE DECIMAL ± .015 THREE PLACE DECIMAL ± .005 BREAK AND DEBURR ALL EDGES .015 MAX	<table border="1"> <thead> <tr> <th></th> <th>NAME</th> <th>DATE</th> <th>MATERIAL</th> </tr> </thead> <tbody> <tr> <td>DRAWN</td> <td>SEV</td> <td>7/1/16</td> <td>SEE PARTS LIST</td> </tr> <tr> <td>CHECKED</td> <td>-</td> <td>-</td> <td>HARDNESS</td> </tr> <tr> <td>ENG APPR.</td> <td>-</td> <td>-</td> <td>WEIGHT</td> </tr> </tbody> </table>		NAME	DATE	MATERIAL	DRAWN	SEV	7/1/16	SEE PARTS LIST	CHECKED	-	-	HARDNESS	ENG APPR.	-	-	WEIGHT
	NAME	DATE	MATERIAL																		
DRAWN	SEV	7/1/16	SEE PARTS LIST																		
CHECKED	-	-	HARDNESS																		
ENG APPR.	-	-	WEIGHT																		
	SIZE <b>B</b>	DWG. NO. <b>16320</b>	REV <b>A</b>																		

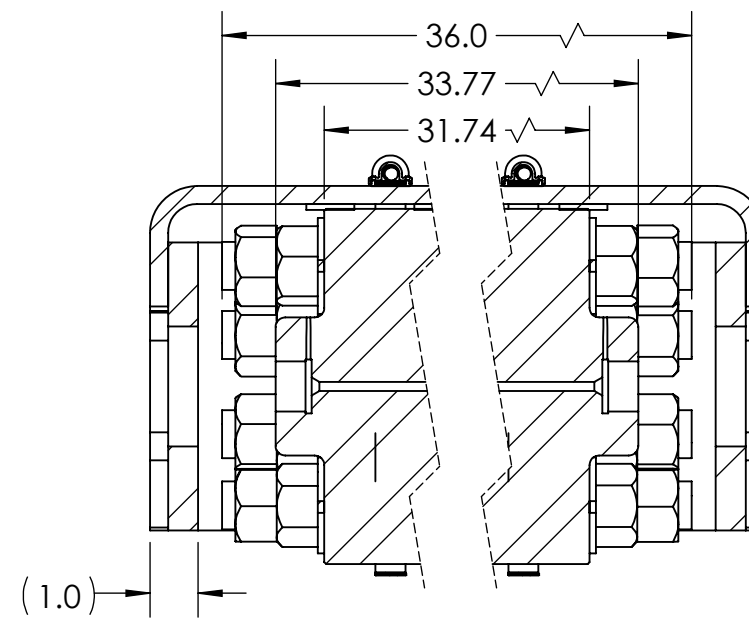
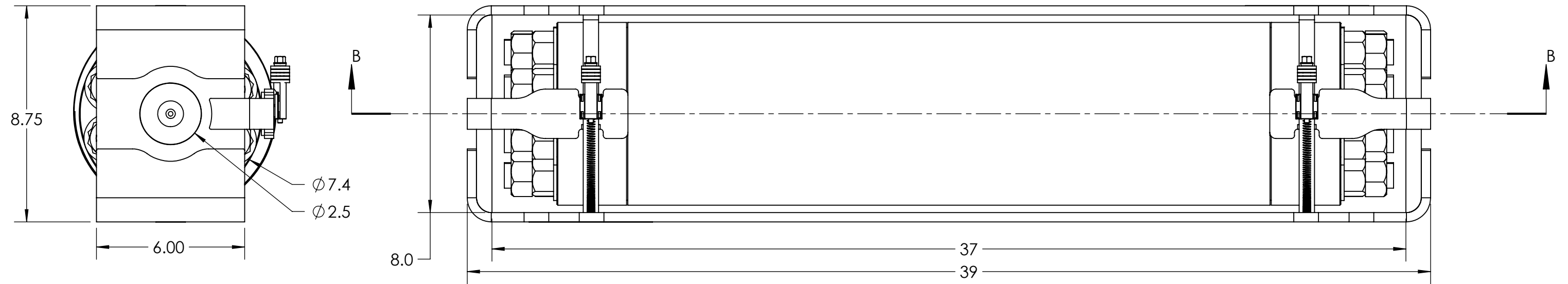
ITEM NO.	PART NUMBER	DESCRIPTION	QTY.
1	16321	WARNING LABEL; 2L ATTENUATOR SHIELD	2
2	16306	WELDMENT, 2L ATTENUATOR GUARD	1



2 PLACES

NOTES:  
1. DECAL WILL ALWAYS APPEAR ON LEFT SIDE WHEN VIEWING FROM STRAIGHT ON

<p><b>HIGHLY CONFIDENTIAL PROPRIETARY INFORMATION</b></p> <p>THIS DRAWING AND ALL INFORMATION CONTAINED THEREON IS CONSIDERED PROPRIETARY AND MAY NOT BE USED FOR MANUFACTURING OR FABRICATION PURPOSES WITHOUT PERMISSION FROM HYPERTHERM, INC.</p>			<p>TITLE: 2L ATTENUATOR GUARD ASSEMBLY - FIELD INSTALLATION</p>			
			<p>NAME: SEV</p> <p>DATE: 7/1/16</p> <p>MATERIAL: SEE PARTS LIST</p>	<p>SHEET: 3 OF 4</p> <p>SCALE: 1:4</p> <p>FINISH: -</p>		
<p>ANGULAR: MACH ± 1 BEND ± 1</p> <p>ONE PLACE DECIMAL ± .05</p> <p>TWO PLACE DECIMAL ± .015</p> <p>THREE PLACE DECIMAL ± .005</p> <p>BREAK AND DEBURR ALL EDGES .015 MAX</p>	<p>CHECKED: -</p> <p>ENG APPR.: -</p>	<p>HARDNESS</p> <p>WEIGHT</p>	<p>SIZE: B</p> <p>DWG. NO.: 16320</p>	<p>REV: A</p>		



SECTION B-B

<p><b>HIGHLY CONFIDENTIAL PROPRIETARY INFORMATION</b></p>	<p><i>Hypertherm</i> 309 5TH AVENUE NW PHONE: 651-294-8600 NEW BRIGHTON, MN 55112 FAX: 651-294-8620 EMAIL: WATERJET@HYPERTHERM.COM WEB: WWW.HYPERTHERM.COM</p>			<p>TITLE: 2L ATTENUATOR GUARD ASSEMBLY - FIELD INSTALLATION</p>																					
	<p>THIS DRAWING AND ALL INFORMATION CONTAINED THEREON IS CONSIDERED PROPRIETARY AND MAY NOT BE USED FOR MANUFACTURING OR FABRICATION PURPOSES WITHOUT PERMISSION FROM HYPERTHERM, INC.</p>	<p>-TOLERANCES- UNLESS OTHERWISE SPECIFIED DIMENSIONS IN INCHES</p> <p>ANGULAR: MACH ± 1 BEND ± 1 ONE PLACE DECIMAL ± .05 TWO PLACE DECIMAL ± .015 THREE PLACE DECIMAL ± .005 BREAK AND DEBURR ALL EDGES .015 MAX</p>	<table border="1"> <tr> <td></td> <td>NAME</td> <td>DATE</td> <td>MATERIAL</td> </tr> <tr> <td>DRAWN</td> <td>SEV</td> <td>7/1/16</td> <td>SEE PARTS LIST</td> </tr> <tr> <td>CHECKED</td> <td>-</td> <td>-</td> <td>HARDNESS</td> </tr> <tr> <td>ENG APPR.</td> <td>-</td> <td>-</td> <td>WEIGHT</td> </tr> </table>		NAME	DATE	MATERIAL	DRAWN	SEV	7/1/16	SEE PARTS LIST	CHECKED	-	-	HARDNESS	ENG APPR.	-	-	WEIGHT	<table border="1"> <tr> <td>SHEET 4 OF 4</td> <td>SCALE: 1:4</td> <td>FINISH -</td> </tr> <tr> <td>SIZE <b>B</b></td> <td>DWG. NO. <b>16320</b></td> <td>REV <b>A</b></td> </tr> </table>	SHEET 4 OF 4	SCALE: 1:4	FINISH -	SIZE <b>B</b>	DWG. NO. <b>16320</b>
	NAME	DATE	MATERIAL																						
DRAWN	SEV	7/1/16	SEE PARTS LIST																						
CHECKED	-	-	HARDNESS																						
ENG APPR.	-	-	WEIGHT																						
SHEET 4 OF 4	SCALE: 1:4	FINISH -																							
SIZE <b>B</b>	DWG. NO. <b>16320</b>	REV <b>A</b>																							